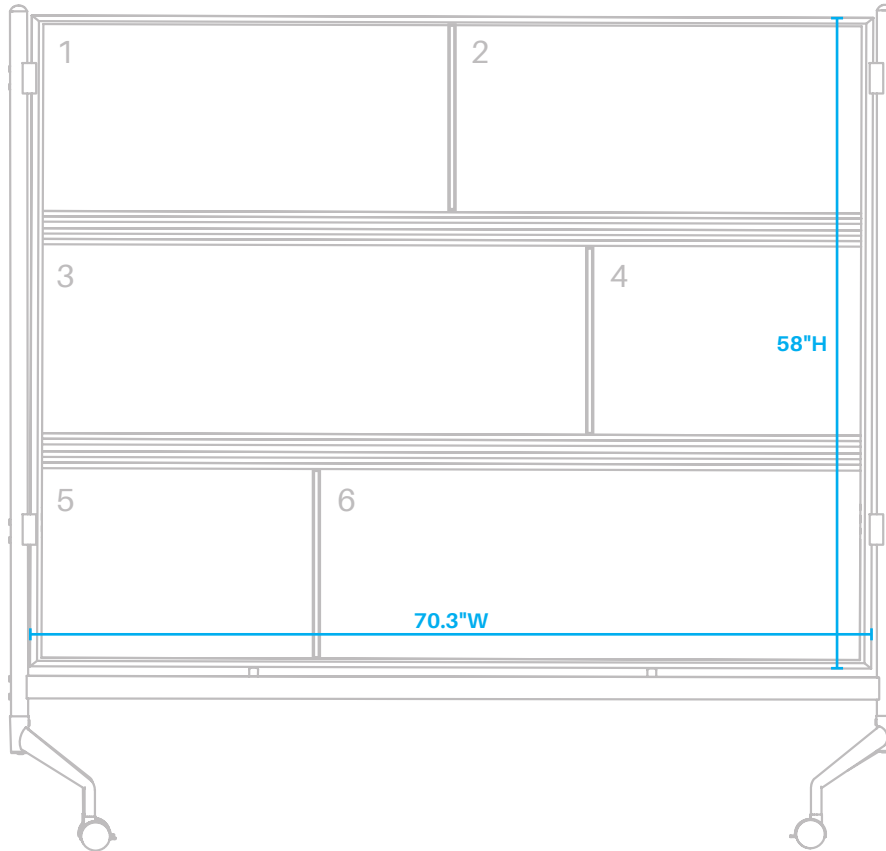


Design Guide: **Divvy D.O.C.**

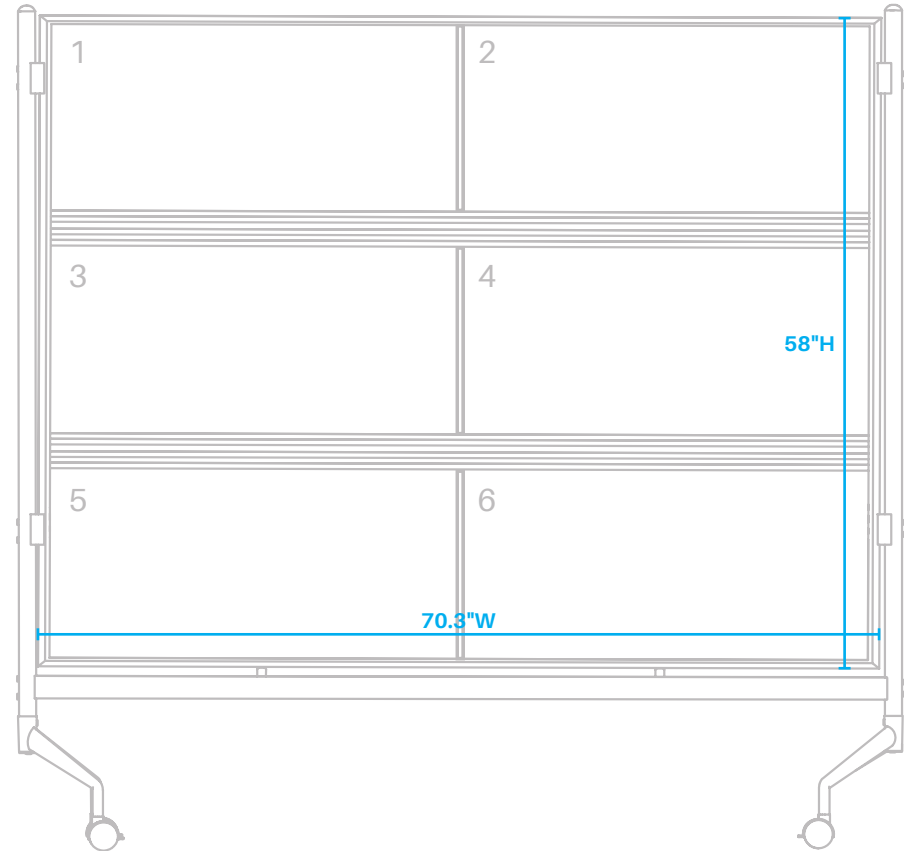
Zig Pattern



Material Selections: *(front and back of each panel will be the same material)*

- | | |
|----------|----------|
| 1. _____ | 2. _____ |
| 3. _____ | 4. _____ |
| 5. _____ | 6. _____ |

Balanced Pattern



Material Selections: *(front and back of each panel will be the same material)*

- | | |
|----------|----------|
| 1. _____ | 2. _____ |
| 3. _____ | 4. _____ |
| 5. _____ | 6. _____ |

Materials Guide: **Divvy D.O.C.**

Surface Options:

Writing Surfaces

Porcelain Steel Whiteboard
 Porcelain Steel Chalkboard
 Dura-Rite HPL Whiteboard

Tack Surfaces

Vinyl
 Natural Cork

Decorative Surfaces

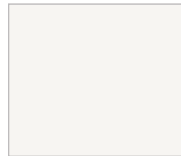
Fabric
 Laminate
 PlexiGlas

PlexiGlas:

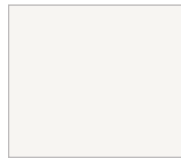


Medium Bronze

Writing:



PS Whiteboard (25)



Dura-Rite HPL (DR)

Vinyl:



Gray (44)



Champagne (41)



Cotton (46)



Pacific Blue (47)



Platinum (56)



Sterling (77)

Fabric Grade Samples: (see full line of fabrics at www.memosamples.com and mayerfabrics.com)



COM*



Grade 01 - Fuse Saffron



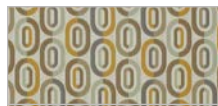
Grade 02 - Knack Brisk



Grade 03 - Free Pearl



Grade 04 - Waver Riverside



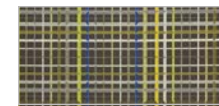
Grade 05 - Ring Alabaster



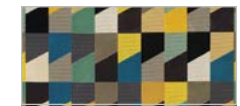
Grade 06 - Arrange Vellum



Grade 07 - Livia Zephyr



Grade 08 - 3D Grid Lucerne



Grade 09 - Lucio Capri

Laminate: (see full line of laminates at www.wilsonart.com)



Gray Nebula (4622)



Graphite Nebula (4623)



Fusion Maple (7909)



Amber Cherry (7919)



Castle Oak (7928)



Asian Night (7949)



Low Line (7998)



Gray Elm (8201)



Your Choice!*

Cork:



Natural Cork (01)

*All COM and custom materials require pre-approval by MooreCo. Even after preliminary approval, MooreCo reserves the right to reject COM/COL if necessary when the quality is not satisfactory for the product. MooreCo assumes no responsibility for overall appearance, flammability, durability, colorfastness, or any other quality after upholstered on a MooreCo product.