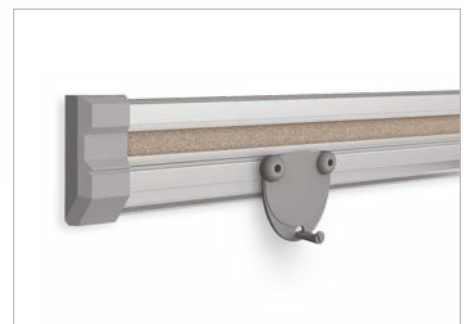


# WHITEBOARD TRACK SYSTEM



## WHITEBOARD TRACK SYSTEM

- Keep your workspace or classroom on track with an intuitive and flexible whiteboard track system.
- System is available in 6' and 8' lengths and includes one sliding removable whiteboard panel. Track includes full-length tackable cork strip for even more display options.
- Removable lightweight sliding panel (43.5"H x 31"W) is double-sided in porcelain steel whiteboard, and trimmed in anodized aluminum. Plastic rollers provide smooth operation.
- Additional sliding whiteboard panels available separately.
- Flip chart clips complete your system.
- SCS Indoor Advantage Gold Certified.



PART NO.	ITEM	DIMENSIONS	SHIP WT.
<b>PRODUCT</b>			
62850*	Whiteboard Track System - Basic (6' Track + Sliding Panel)	43.5"H x 72"W	34 lbs
62852**	Whiteboard Track System - Basic (8' Track + Sliding Panel)	43.5"H x 96"W	36 lbs
<b>OPTIONAL ACCESSORIES</b>			
62712*	Whiteboard Track System Removable Sliding Panel	43.5"H x 31"W	27 lbs

Shipping weights are listed on a per item basis and may vary based on quantities ordered.

\*Ships UPS.

\*\*Ships UPS with large package surcharge or additional handling fee.



MOORECO + ESSENTIALS BY MOORECO  
 2885 Lorraine Avenue | Temple, TX 76501  
 p: 800.749.2258 | f: 866.888.7483  
[moorecoinc.com](http://moorecoinc.com) | [essentialsbymooreco.com](http://essentialsbymooreco.com)

Rev 04-07-2022