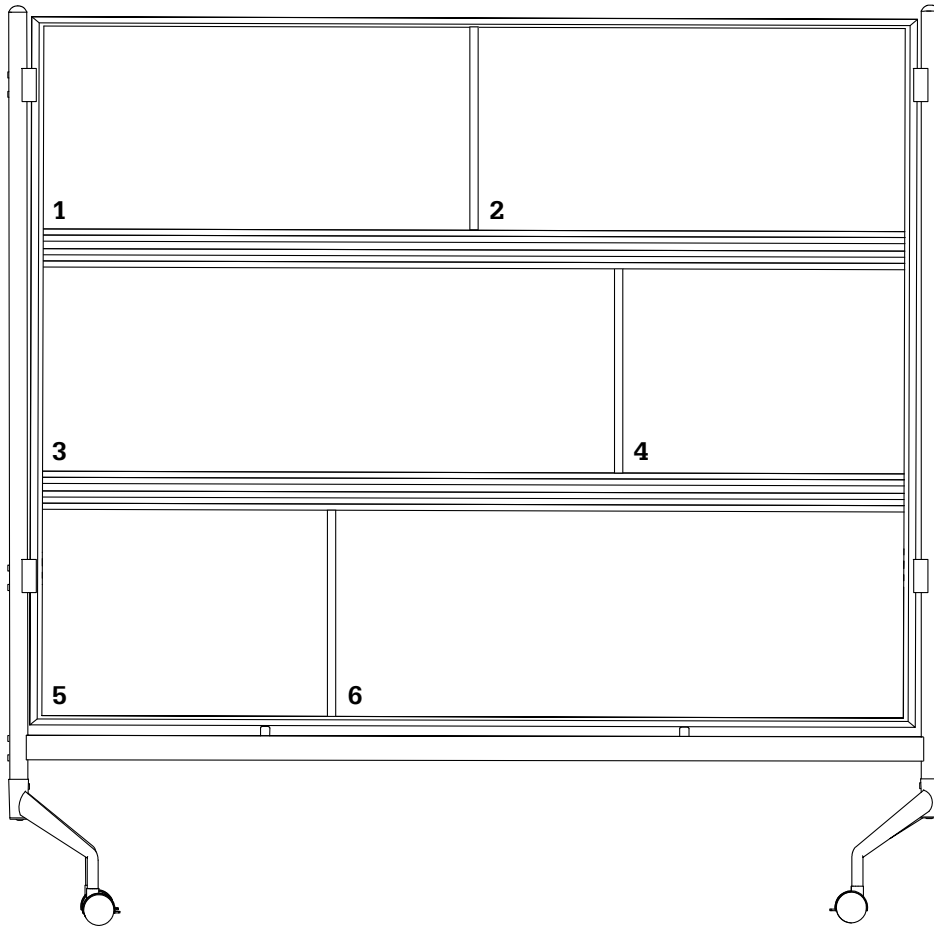


Design Guide: **Divvy D.O.C.**



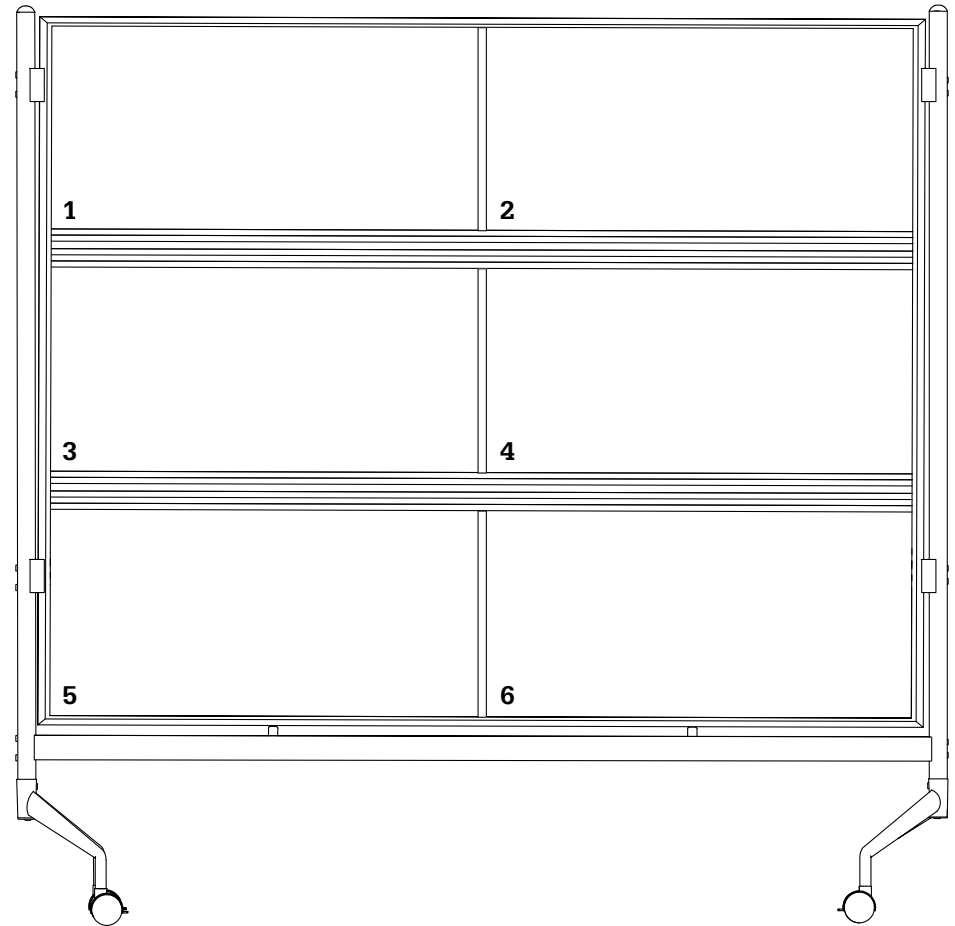
Zig Pattern:



Materials Selection: *(front and back of each panel will be the same material)*

1.	2.
3.	4.
5.	6.

Balanced Pattern:

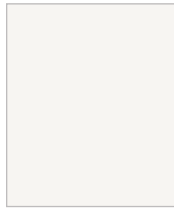


Materials Selection: *(front and back of each panel will be the same material)*

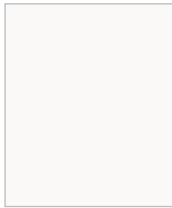
1.	2.
3.	4.
5.	6.

Material Selection Guide: **Divvy D.O.C.**

Writable Surfaces:



Porcelain Steel
Whiteboard
(25)



Dura-Rite® HPL
Whiteboard
(DR)

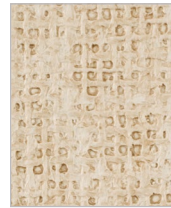
Tackable Surfaces:



Natural Cork
(01)



Champagne (41)



Cotton (46)



Gray (44)



Pacific Blue (47)



Platinum (56)



Sterling (77)

Decorative Surfaces:

HPL



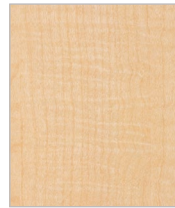
Amber Cherry
(7919-60)



Asian Night
(7949-38)



Castle Oak
(7928-38)



Fusion Maple
(7909-60)



Graphite Nebula
(4623-60)



Grey Elm
(8201-60)



Grey Nebula
(4622-60)



Low Line
(7998-60)

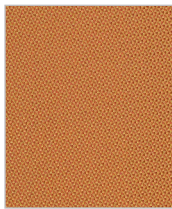


Customer Own
Laminate
(COL)*

Fabric* (pricing varies based on grade chosen; examples shown for illustrative purposes only):



Everywhere EPU
Real Red
(Momentum)



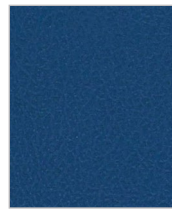
Quattro
Golden Orange
(Mayer)



Silica Triad
Zing
(Momentum)



Variant
Jungle
(Mayer)



Agora II
Regatta
(Momentum)



Soleil
Orchid
(Mayer)



Mogul EPU
Heir
(Momentum)



Slick
Glacier
(Mayer)



Tanner
Black
(Momentum)



Customer Own
Material
(COM)*

*All fabric and material options must be pre-approved by MooreCo. All customer own material (COM) and customer own laminate (COL) materials must be pre-approved by MooreCo. Even after preliminary approval, MooreCo reserves the right to reject materials when necessary if the quality is not satisfactory for the finished product. MooreCo assumes no responsibility for overall appearance, flammability, durability, colorfastness, or any other quality after upholstered on a MooreCo product.