

NEWSLETTER VOL. V | EDSPACES 2023

EDSpaces Newsletter

WELCOME CJ DESIGNS!
LIVE + BREATHE THRIVE
EARN CEU HOURS
NEW WEBSITE FEATURES
NEW PRODUCTS FOR 2024



MOORECO™

Welcome CJ Designs to the MooreCo Family!

2023 has brought many exciting new additions to the MooreCo family. Our commitment to creating exceptional products remains as strong as ever, and each day, we're crafting innovative solutions that are positively impacting the lives of students.

Notable new members to the MooreCo team are CJ Designs, based in Morristown, TN, and its founder, Stewart Long. Acquired earlier this year after an 8 year-long partnership, this extraordinary facility and its wonderful crew will continue to manufacture our soft seating collections with craftsmanship, care, and dedication. CJ Designs is more than just a manufacturing facility, it is a seasoned and trusted expert in the field of textiles and furniture building. Stewart will continue to spearhead the Tennessee facility as VP of MooreCo's Soft Seating Division.

What does this mean for you?

This partnership allows our Thrive Philosophy to be implemented across all product solutions more holistically, enabling us to imagine new and reliable products to meet the developmental needs of students.

Above all, you'll receive your custom soft seating in record time! By keeping production in-house, we gain greater control over the manufacturing process, ensuring top-notch quality and service, shorter lead times even during peak educational months, and more efficient communication. This not only allows us to maintain higher standards for our educational products but also reduces the risks associated with supply chain disruptions.

Moreover, by investing in a local manufacturer, we contribute to job creation and support communities, aligning our values with economic growth and sustainability. Where resilience and adaptability are paramount, this move bolsters our commitment to excellence, reliability, and sustainability.

MooreCo is incredibly excited about the furniture solutions we can bring to facilities. We look forward to a future of shared success and continued growth.



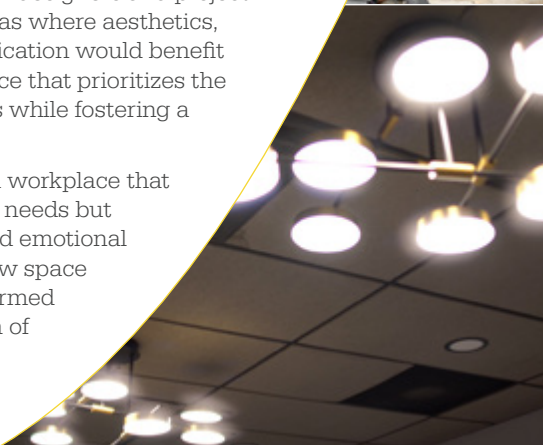


MooreCo Lives and Breathes Thrive

MooreCo's home in Temple, Texas recently underwent a Thrive transformation! Our Thrive Philosophy was conceived to show how the conscious design of environments can impact human happiness and health. We pride ourselves on applying the Thrive principles to everything we do, including optimizing our own spaces so MooreCo employees have the tools they need to work their magic.

Our in-house team of interior designers and project managers identified the areas where aesthetics, collaboration, and communication would benefit our staff. The result is a space that prioritizes the well-being of our employees while fostering a sense of unity and pride.

The office revamp created a workplace that not only addresses physical needs but also nurtures the mental and emotional vitality of our team. This new space boosted morale and transformed our headquarters into a den of productivity, where each employee can thrive and find inspiration every day.



Earn CEU Hours with MooreCo + Thrive

Our Thrive Philosophy is now a certified CEU course! This course can be completed in person or online. Course topics include the six developmental aspects of Thrive, the opportunities and challenges faced with meeting those developmental needs, and how to plan and design spaces to accommodate each.

This course will earn you a CEU credit and provide you with valuable research and design ideas for developing inclusive, cohesive spaces that help students grow.

Contact Polly Moore at pmoore@moorecoinc.com for more information.



Check out our Thrive video for more info!

New Website Features Maximize User Experience



We are preparing to launch new features for our users with carefully thought-out portals for designers, dealers, and end users.

Each portal is customized to give you the resources you need based on your role. Some features include access to open orders, quotes, invoices, shipments, customer care tickets, and purchase history. Manage your MooreCo account all in one place!

Join our mailing list to receive registration information.

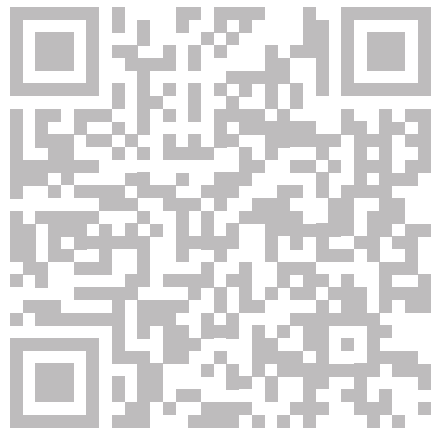
Create an account to view your:

- Open Orders
- Quotes
- Invoices
- Shipments
- Customer Care Tickets
- Purchase History

What's in Store for 2024?

2024 is all about cultivating inclusivity and nourishing minds and bodies. We are taking comfort, versatility, and adaptability to new levels with soft seating, flip-top tables, and sleek finishes.

Take a peek and join our mailing list for product launches, detailed specs, and inspiring ways to use new products in your spaces.



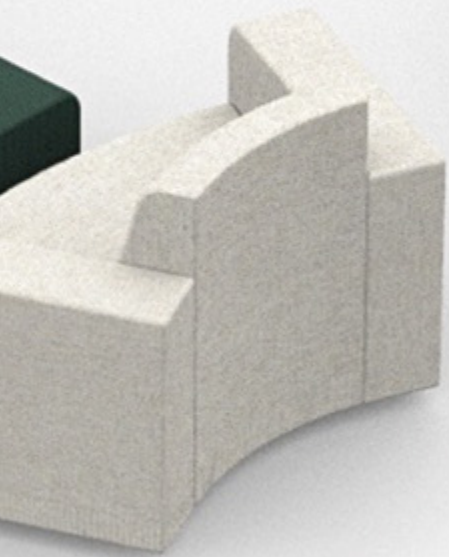
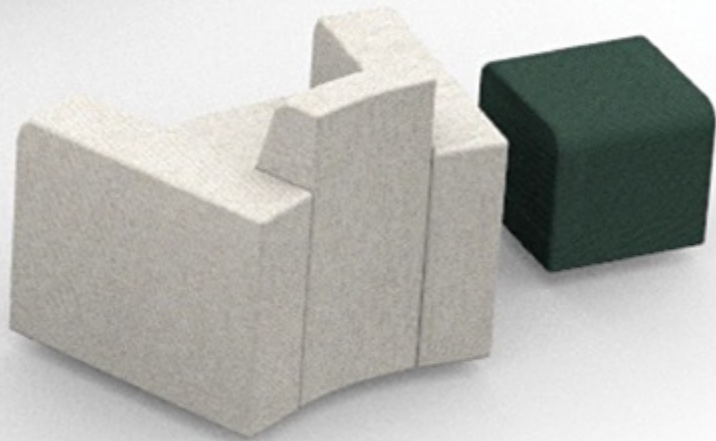
Scan to
sign up!



The Great Outdoors

This sleek line of indoor/outdoor soft seating is perfect for K-6 active learning. Create an engaging, playful environment and enhance the overall ambiance of any space with artful, mix-and-match shapes.





Curl Up!

This unique, oversized lounger is a showstopper! The Soft Koil is made of high-density foam covered in a pillowy soft overlay, creating a comfortable, playful transport into a world of imagination, curiosity, and exploration.



inklüd

BY MOORECO

Meet Inklüd

Elevate users to their fullest potential with all new Inklüd tables. Their adaptability is a hallmark, offering versatile solutions with customizable features, including flip tops, a variety of bases, and adjustable heights.

Upgrade to a porcelain steel whiteboard top and create an on-demand brainstorming zone!



A Maker Space Paradise

The massive workspace of the Compass Island Table can accommodate large, collaborative, hands-on projects. With a sturdy, durable, customizable MooreCo Compass Cabinet as its base, you can dream up your ideal workstation and the Compass Island will deliver!



Incubate with New Cocoon Community Tables

This new line of sleek, communal tables provides a hub where students can work together, share ideas, and nourish relationships. Multifunctional and maneuverable, tables come in a variety of sizes and allow for customizations such as added storage cubbies or casters. The unique design prevents damage and is easy to set up.



Updates to Your Favorites

We've done it! We've made some of your go-to products even better! Check out new product colors and finishes to revamp your space.



Cayenne and Currant and Moss! Oh my!

Add vibrancy and personality to your classroom with these new, stunning product colors.



Moss



Endless Sea



Bee



Cayenne



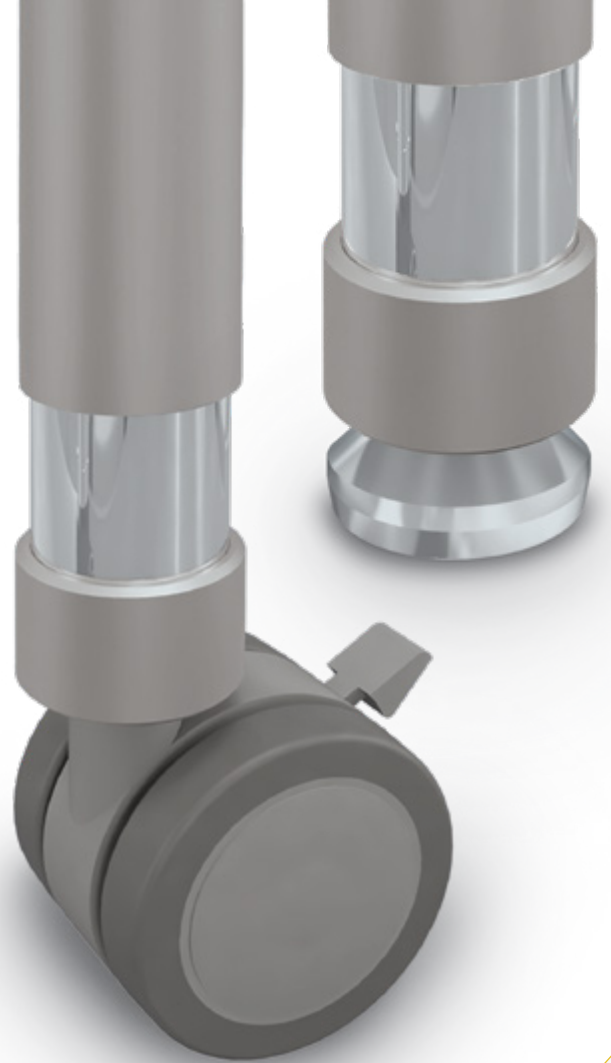
Looking for a clean, seamless look?

Our new tabletop laminates with self edge bands create a sophisticated, high-end finish.



The popular Hierarchy tables have new stems!

The legs now have sturdier, dual-wheel casters and require only one screw for quick and easy height adjustment. All for the same great price!



Follow us:



[instagram.com/mooreco_inc](https://www.instagram.com/mooreco_inc)



[linkedin.com/company/mooreco-inc.](https://www.linkedin.com/company/mooreco-inc)



[pinterest.com/moorecoinc](https://www.pinterest.com/moorecoinc)



[facebook.com/moorecoinc](https://www.facebook.com/moorecoinc)



[youtube.com/moorecoinc](https://www.youtube.com/moorecoinc)



twitter.com/moorecoinc



[tiktok.com/@moorecoinc](https://www.tiktok.com/@moorecoinc)



MOORECOTM

MooreCo Inc.

2885 Lorraine Avenue | Temple, TX 76501

p: 800.749.2258 | f: 866.888.7483

www.moorecoinc.com