

glass boards

PRODUCT GUIDE 2024



MOORECO™



MooreCo Inc.

2885 Lorraine Avenue | Temple, TX 76501

p: 800.749.2258 | f: 866.888.7483

www.moorecoinc.com

©2023–2024 MooreCo, Inc. All rights reserved.

MooreCo, Inc. reserves the right to correct pricing or copy errors.

Due to the current volatility in the price of raw and finished materials, please refer to our web site for the latest price list for pricing. Since individual items are subject to availability of materials from our suppliers, we reserve the right to limit quantities.

All shipping weights are nominal and may vary depending on items and quantities ordered. When ordering please contact MooreCo customer service at 1-800-749-2258 for accurate shipping rates and lead times.

Board dimensions reflect panel sizes prior to framing. All boards listed as 3'H x 4'W actually measure 33-3/4"H x 48"W due to shipping restrictions. Dimensions on all glass dry erase boards are estimated and may vary slightly.

Return Policy: A return authorization is required for the return of any merchandise. All requests for returns should be made within 90 (ninety) days of receipt of merchandise. The dealer may be responsible for restock and return freight charges. Returned products must be unused, undamaged, and in the original packaging. Please contact customer service for more details. Returned merchandise may be subject to a restocking fee.

Restocking Fee: Returned merchandise will be subject to a restocking fee.

Non-Returnable Merchandise: All boards and furniture which have been custom sized, custom framed, or customized to specifications will be considered a non-returnable item.

Why choose glass boards?



Performance

Ultra smooth glass surface naturally provides exceptional writability and erasability, and is a true pleasure to use. You can use a wide variety of markers or other writing instruments with ease and with no worries of staining or ghosting.



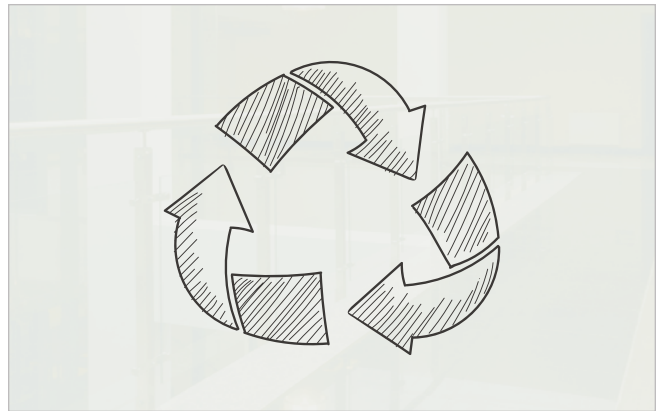
Low Maintenance

Glass surface is easy to clean with common household products. Simply clean as you would a mirror or any other glass surface. Markers, either dry erase or permanent, are easy to wipe away. Even grease pens can be used with no worries.



Durability

Made with tempered safety glass that is much stronger than standard glass, these boards will stand the test of time. Backed with a steel sheet that adds not only the ability to accept magnets, but strength and structural stability as well.



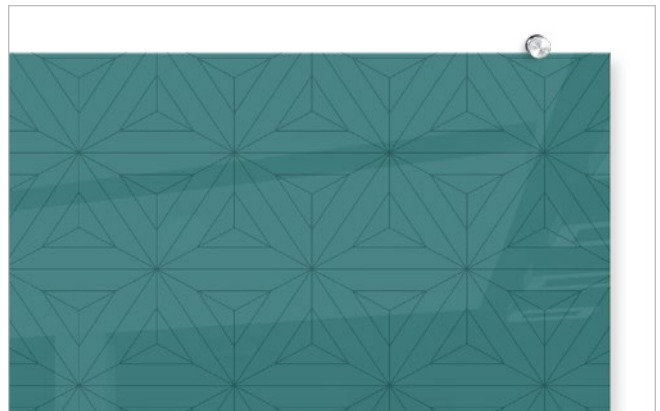
Environmental Responsibility

Glass boards are made with recyclable glass and recyclable aluminum hardware, making the boards one of the best choices for the environmentally responsible company. Reusable materials and long life means less turnover as well.



High End Style

With its naturally silky smooth and reflective surface, glass instantly elevates any environment with a modern and high end look. Glass boards are also available in a wide variety of colors that will instantly add inspiration to any plain space.



Customizability

You can create your own designer glass board with ease, adding even more of a personal touch to your environment. Choose your own color, or even add your company logo, design, or any other permanent graphic.

GO ON A BUSINESS TRIP

- POLICIES
- COST CENTERS
- JUSTIFICATIONS



COLLECT ALL OF THE RECEIPTS

- PEOPLE OFTEN LOSE RECEIPTS!
- YOU NEED TO CARRY RECEIPTS AROUND WITH YOU



FINISH THE TRIP



FILL OUT EXPENSES FORM

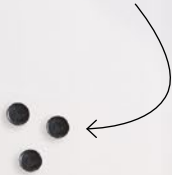
- RECEIPTS MUST BE MAPPED!



SUBMIT THE FORM

- APPROVE
- SEND EVERYTHING TO FIN DEPT

Steel-backed glass surface accepts rare earth magnets!





Visionary® Magnetic Glass Board

- A contemporary communication tool. Ultra glossy magnetic markerboard provides exceptional dry erase performance.
- Modernize your space with a functional and contemporary image. Visionary magnetic glass boards provide the best of a quality whiteboard with smart style.
- Borderless and seamless, standard in glossy white. Available in standard and custom color options. Custom graphics printing available.
- Tempered safety glass ideal for use in any environment. Compatible with any dry erase or wet erase marker, chalk marker, grease pen, etc. Easily cleans without ghosting or staining. Accepts rare earth magnets.
- Attractive stainless steel mounting standoffs. Mounts are standard with a silver finish.
- Includes aluminum accessory tray and set of magnets. Optional glass accessory tray available.
- Fifty year limited warranty.
- SCS Indoor Advantage Gold Certified.

PART NO.	DIMENSIONS	SHIP WT.
VISIONARY BOARD		
83843	23.6"H x 35.4"W	19 lbs
83844	35.4"H x 47.2"W	42 lbs
83841	47.2"H x 47.2"W	46 lbs
83845	47.2"H x 70.9"W	79 lbs
83846	47.2"H x 94.5"W	104 lbs
GLASS ACCESSORY TRAY		
572	1"H x 12"W x 4"D	2 lbs

VIEW ONLINE

Visionary® Hierarchy Magnetic Glass Board

- Reflect on your true colors. Ultra modern glass boards now available in multiple colors to accentuate any space.
- Modernize your space with a functional and contemporary image. Visionary Hierarchy magnetic glass boards provide the best of a quality whiteboard with smart style.
- Borderless and seamless, the board is available in fresh modern colors to match your environment and our line of Hierarchy furniture.
- Tempered safety glass ideal for use in any environment. Compatible with any dry erase or wet erase marker, grease pen, etc. Easily cleans without ghosting or staining. Accepts rare earth magnets.
- Attractive stainless steel mounting standoffs. Mounts are standard with a silver finish, but accessory mounts now available with a brass finish for an upgraded appearance (purchase separately).
- Includes aluminum accessory tray and set of magnets. Glass accessory tray available separately.
- Fifty year limited warranty.
- SCS Indoor Advantage Gold Certified.


PART NO.	DIMENSIONS	SHIP WT.
VISIONARY HIERARCHY BOARD - 3'H X 4'W		
83844-RED	35.4"H x 47.2"W	42 lbs
83844-ORANGE	35.4"H x 47.2"W	42 lbs
83844-YELLOW	35.4"H x 47.2"W	42 lbs
83844-GREEN	35.4"H x 47.2"W	42 lbs
83844-BLUE	35.4"H x 47.2"W	42 lbs
83844-NAVY	35.4"H x 47.2"W	42 lbs
83844-PURPLE	35.4"H x 47.2"W	42 lbs
VISIONARY HIERARCHY BOARD - 4'H X 6'W		
83845-RED	47.2"H x 70.9"W	79 lbs
83845-ORANGE	47.2"H x 70.9"W	79 lbs
83845-YELLOW	47.2"H x 70.9"W	79 lbs
83845-GREEN	47.2"H x 70.9"W	79 lbs
83845-BLUE	47.2"H x 70.9"W	79 lbs
83845-NAVY	47.2"H x 70.9"W	79 lbs
83845-PURPLE	47.2"H x 70.9"W	79 lbs
VISIONARY HIERARCHY BOARD - 4'H X 6'W		
83846-RED	47.2"H x 94.5"W	104 lbs
83846-ORANGE	47.2"H x 94.5"W	104 lbs
83846-YELLOW	47.2"H x 94.5"W	104 lbs
83846-GREEN	47.2"H x 94.5"W	104 lbs
83846-BLUE	47.2"H x 94.5"W	104 lbs
83846-NAVY	47.2"H x 94.5"W	104 lbs
83846-PURPLE	47.2"H x 94.5"W	104 lbs

VIEW ONLINE



Piano Practice Schedule

Name	Days	Time
James McElroy	Mon, Wed, Fri	2:00 pm
Elizabeth Jordan	Mon, Wed, Fri	3:15 pm
Junie Simpson	Mon, Wed, Fri	4:30 pm
Caleb Douglas	Tues, Thurs, Sat	1:00 pm
Leandra Douglas	Tues, Thurs, Sat	2:15 pm
Marcel Anders	Tues, Thurs, Sat	3:30 pm

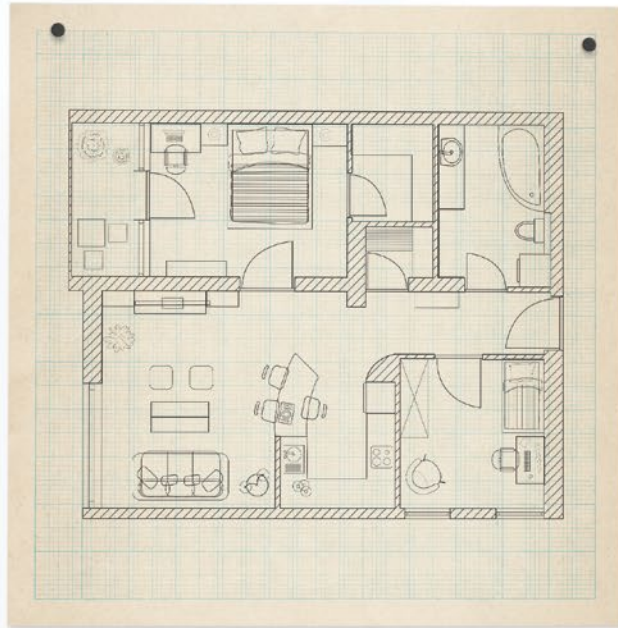


PIANO
LESSONS

STARTING SEPTEMBER 1
OPEN TO AGES 5 - 18 • LESSON BOOKS PROVIDED

FOR FULL SCHEDULE & REGISTRATION FORM PLEASE VISIT
WWW.JAUNEMUSIC SCHOOL.COM

Steel-backed glass surface accepts rare earth magnets!





Insight® Low Iron Magnetic Glass Board

- Make yourself crystal clear. Elegant frameless magnetic glass surface elevates any environment.
- Dramatic glass style meets dynamic versatility with the elegant and modern Insight Magnetic Glass Board in low iron white.
- Add seamless style to any environment with low iron glass and sleek concealed hanging system, providing a minimalist element to your workspace.
- Tempered safety glass provides smooth writability with unparalleled erasability. White glass is low iron, which greatly reduces the green cast of regular glass, providing a more true white coloration.
- Durable steel backing allows the board to accept rare earth magnets.
- Compatible with any dry erase or wet erase marker, grease pen, etc., and easily cleans without ghosting or staining.
- Can be hung horizontally or vertically. Concealed mounting devices give a seamless appearance.
- Includes glass accessory tray, set of rare earth magnets, and eraser.
- Customize the glass panel in a variety of ways to personalize your workspace, including color and graphic printing options.
- Fifty year limited warranty.
- SCS Indoor Advantage Gold Certified.

PART NO.	DIMENSIONS	SHIP WT.
INSIGHT BOARD		
83908	35.4"H x 47.2"W	42 lbs
83906	47.2"H x 59.7"W	75 lbs
83909	47.2"H x 70.9"W	88 lbs
83910	47.2"H x 94.5"W	104 lbs

VIEW ONLINE



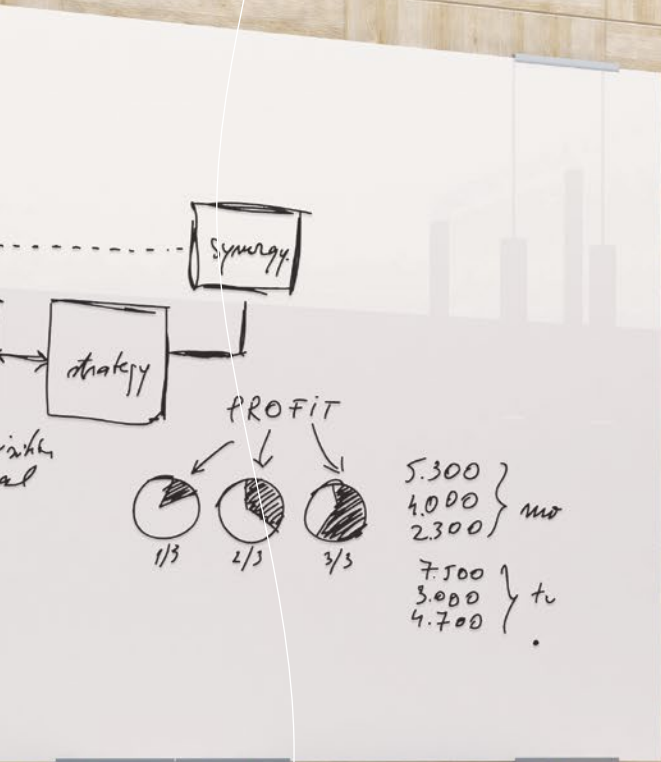
Visionary® Magnetic Glass Board + Exo Tray System

- Upgrade your expectations. Finally a glass board with an ultra stylish accessory tray.
- Modernize your space with a functional and contemporary image. Visionary magnetic glass boards provide the best of a quality whiteboard with smart style.
- Compatible with any dry erase or wet erase marker, grease pen, etc. Easily cleans without ghosting or staining. Accepts rare earth magnets. Includes set of magnets.
- Tempered safety glass ideal for use in any environment. Available in gloss white or standard and custom color options. Custom graphics printing available.
- Now available with the Exo Tray System, providing clean and functional anodized aluminum accessory storage in an ultra fashionable package.
- Fifty year limited warranty.
- SCS Indoor Advantage Gold Certified.

PART NO.	DIMENSIONS	SHIP WT.
VISIONARY BOARD + EXO TRAY		
83843-1X576	23.6"H x 35.4"W	19 lbs
83844-1X576	35.4"H x 47.2"W	42 lbs
83845-2X576	47.2"H x 70.9"W	79 lbs
83846-2X576	47.2"H x 94.5"W	105 lbs

[VIEW ONLINE](#)

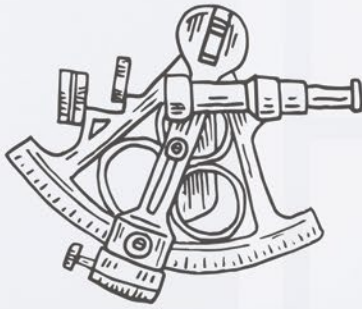


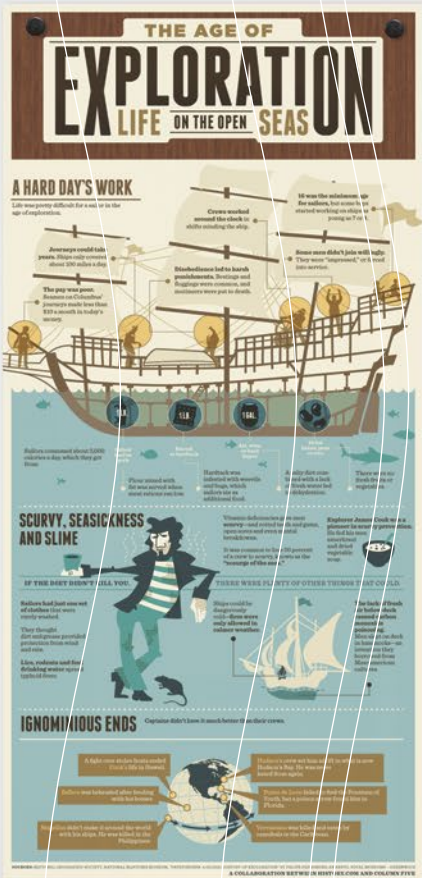




Discovery
of
America
1492

"Sextant"
the device
of
astronomical
navigation





Framed Magnetic Glass Board

- Our Best in Class® glass board with a safety edge. Framed glass surface is a superior writing and erasing surface.
- Modernize your classroom with a functional and contemporary image. Framed magnetic glass boards provide the best of a quality whiteboard with smart style.
- Available standard in gloss white tempered safety glass ideal for use in any environment. Other color options, including custom colors and custom graphics, are available.
- Compatible with any dry erase or wet erase marker, grease pen, etc. Easily cleans without ghosting or staining. Accepts rare earth magnets.
- Anodized aluminum trim has a 1-3/32" profile with hairline mitered corners. Includes a full-length tackable map rail with a colored cork insert, and a full-length accessory tray with rubber Dura-Safe® end caps to eliminate sharp edges.
- Specially engineered trim is designed with vinyl glazing so that aluminum does not contact glass at all. The trim corners are mitered and attached with friction locks.
- Fifty year limited warranty.
- SCS Indoor Advantage Gold Certified.

PART NO.	DIMENSIONS	SHIP WT.
FRAMED MAGNETIC GLASS BOARD		
14800	35.4"H x 47.2"W	51 lbs
14801	47.2"H x 70.9"W	90 lbs
14802	47.2"H x 94.5"W	120 lbs

VIEW ONLINE



Custom Graphic Wall Mount & Mobile Glass Boards

Take individuality, branding, and personalization to the next level by creating your very own bespoke graphic glass board. With the modern appeal of glass dry erase, your design will be elevated into something unique and unforgettable, while maintaining all the functionality you expect from a MooreCo glass board.

- Compatible with any dry erase or wet erase marker, grease pen, etc. Easily cleans without ghosting or staining. Accepts rare earth magnets. Includes set of magnets.
- Tempered safety glass ideal for use in any environment. Available in gloss white or standard and custom color options. Custom graphics printing available.
- Available as a wall mounted board or as a mobile board, ideal as a mobile sign, or for board rooms and training rooms.
- Wall mounted boards includes aluminum accessory tray. Optional glass accessory tray available separately.
- Wall mounted boards come with a fifty year limited warranty.
- SCS Indoor Advantage Gold Certified.

[VIEW ONLINE](#)



HOUSE SPECIALS

- Salmon Filet \$10
- Tenderloin \$13
- Vanilla Float \$1.50
- Hot Chocolate \$2.50

COLD DRINKS

- Vanilla Float \$5.50
- Chocolate Shake \$6.50

DESSERTS

- Pastry \$11
- Cheesecake \$12
- Lemon Cake \$15
- Ice Cream \$15
- Mix Any Two \$17

COFFEE MENU

Coffee is always a good idea

COFFEE

- AMERICANO
- MOCHA
- CAPPUCCINO
- MACCHIATO
- ESPRESSO

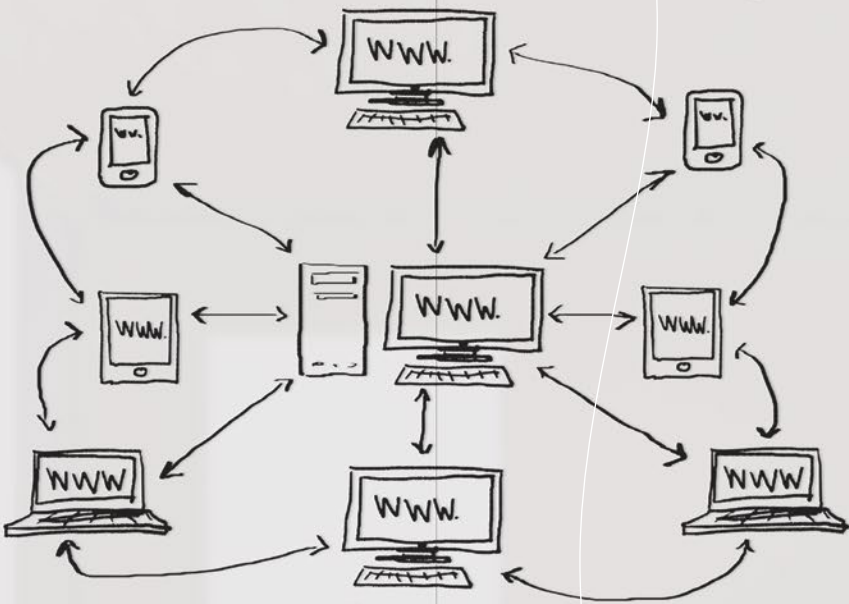
MINI BITES

- CROISSANT
- SANDWICH
- FRENCH TOAST

DESSERTS

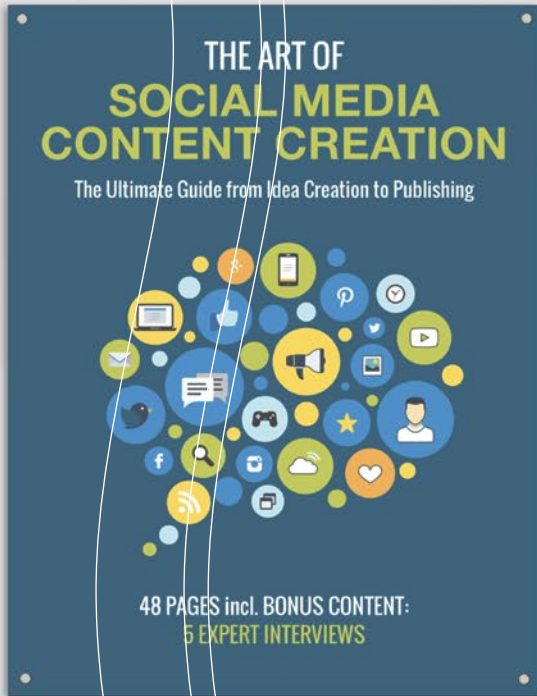
- DOUGHNUT
- CHEESECAKE





Fluent Office Glass Wall System

- Turn your blank walls into something extraordinary with purpose. Fluent Office Glass Wall System is engineered to incorporate the best qualities of magnetic glass markerboards with a modular full wall whiteboard.
- Create a user-friendly room-sized presentation surface. System will elevate your walls with functional whiteboard space, ideal for communication, collaboration, and creativity.
- Glass is available standard in gloss white, or in any of our standard glass colors. Create one sleek monochrome wall, or mix and match for a designer appearance. Custom colors and graphics also available.
- Fluent features slim and modern anodized aluminum trim along the top edge, and a full-length anodized aluminum accessory tray along the bottom.
- **Please note:** Glass wall construction cannot accommodate cut outs for outlets or light switches.
- Fifty year limited warranty. SCS Indoor Advantage Gold Certified.



PART NO.	DIMENSIONS	SHIP WT.
GLOSS WHITE		
GWC406-GLOSSWHITE	4H x 6W	79 lbs
GWC408-GLOSSWHITE	4H x 8W	104 lbs
GWC412-GLOSSWHITE	4H x 12W	170 lbs
GWC416-GLOSSWHITE	4H x 16W	224 lbs
GWC608-GLOSSWHITE	6H x 8W	166 lbs
GWC612-GLOSSWHITE	6H x 12W	249 lbs
GWC616-GLOSSWHITE	6H x 16W	332 lbs
GWC620-GLOSSWHITE	6H x 20W	415 lbs
GWC624-GLOSSWHITE	6H x 24W	498 lbs
GWC808-GLOSSWHITE	8H x 8W	216 lbs
GWC812-GLOSSWHITE	8H x 12W	324 lbs
GWC816-GLOSSWHITE	8H x 16W	432 lbs
GWC820-GLOSSWHITE	8H x 20W	540 lbs
GWC824-GLOSSWHITE	8H x 24W	648 lbs
LOW IRON WHITE		
GWC406-WHITE	4H x 6W	79 lbs
GWC408-WHITE	4H x 8W	104 lbs
GWC412-WHITE	4H x 12W	170 lbs
GWC416-WHITE	4H x 16W	224 lbs
GWC608-WHITE	6H x 8W	166 lbs
GWC612-WHITE	6H x 12W	249 lbs
GWC616-WHITE	6H x 16W	332 lbs
GWC620-WHITE	6H x 20W	415 lbs
GWC624-WHITE	6H x 24W	498 lbs
GWC808-WHITE	8H x 8W	216 lbs
GWC812-WHITE	8H x 12W	324 lbs
GWC816-WHITE	8H x 16W	432 lbs
GWC820-WHITE	8H x 20W	540 lbs
GWC824-WHITE	8H x 24W	648 lbs
SPECIFY COLOR		
GWC406-COLOR	4H x 6W	79 lbs
GWC408-COLOR	4H x 8W	104 lbs
GWC412-COLOR	4H x 12W	170 lbs
GWC416-COLOR	4H x 16W	224 lbs
GWC608-COLOR	6H x 8W	166 lbs
GWC612-COLOR	6H x 12W	249 lbs
GWC616-COLOR	6H x 16W	332 lbs
GWC620-COLOR	6H x 20W	415 lbs
GWC624-COLOR	6H x 24W	498 lbs
GWC808-COLOR	8H x 8W	216 lbs
GWC812-COLOR	8H x 12W	324 lbs
GWC816-COLOR	8H x 16W	432 lbs
GWC820-COLOR	8H x 20W	540 lbs
GWC824-COLOR	8H x 24W	648 lbs

VIEW ONLINE

Liso Classroom Glass Wall System

- Turn your blank walls into something extraordinary with purpose. Liso Classroom Glass Wall System is engineered to incorporate the best qualities of magnetic glass markerboards with a modular full wall whiteboard.
- Create a user-friendly room-sized presentation surface. System will elevate your walls with functional whiteboard space, ideal for communication, collaboration, and creativity.
- Glass is available standard in gloss white, or in any of our standard glass colors. Create one sleek monochrome wall, or mix and match for a designer appearance. Custom colors and graphics also available.
- Liso features a full-length tackable map rail along the top edge, and a full-length anodized aluminum accessory tray along the bottom for storing markers and erasers.
- **Please note:** Glass wall construction cannot accommodate cut outs for outlets or light switches.
- Fifty year limited warranty. SCS Indoor Advantage Gold Certified.

PART NO.	DIMENSIONS	SHIP WT.
GLOSS WHITE		
GWB406-GLOSSWHITE	4H x 6W	79 lbs
GWB408-GLOSSWHITE	4H x 8W	104 lbs
GWB412-GLOSSWHITE	4H x 12W	170 lbs
GWB416-GLOSSWHITE	4H x 16W	224 lbs
LOW IRON WHITE		
GWB406-WHITE	4H x 6W	79 lbs
GWB408-WHITE	4H x 8W	104 lbs
GWB412-WHITE	4H x 12W	170 lbs
GWB416-WHITE	4H x 16W	224 lbs
SPECIFY COLOR		
GWB406-COLOR	4H x 6W	79 lbs
GWB408-COLOR	4H x 8W	104 lbs
GWB412-COLOR	4H x 12W	170 lbs
GWB416-COLOR	4H x 16W	224 lbs

VIEW ONLINE



Ex: A plane is flying east at 100 mph. The wind is blowing 20 mph toward 60° N of E. What is the resulting speed of the plane?

$$\vec{P} = 100\mathbf{i}$$

$$\vec{W} = 10\mathbf{i} + 10\sqrt{3}\mathbf{j}$$

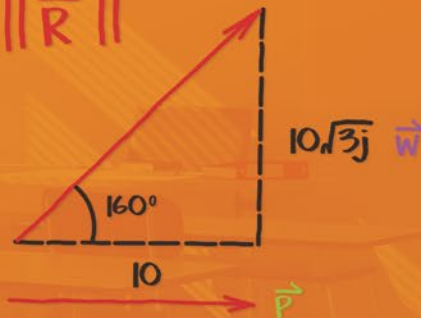
$$\therefore \vec{R} = \vec{P} + \vec{W}$$

$$= 100\mathbf{i} + 10\mathbf{i} + 10\sqrt{3}\mathbf{j}$$

$$\vec{R} = 110\mathbf{i} + 10\sqrt{3}\mathbf{j}$$



$$\|\vec{R}\|$$



VECTOR MATH

A vector is a quantity with magnitude and direction.



$$\vec{A} \rightarrow$$

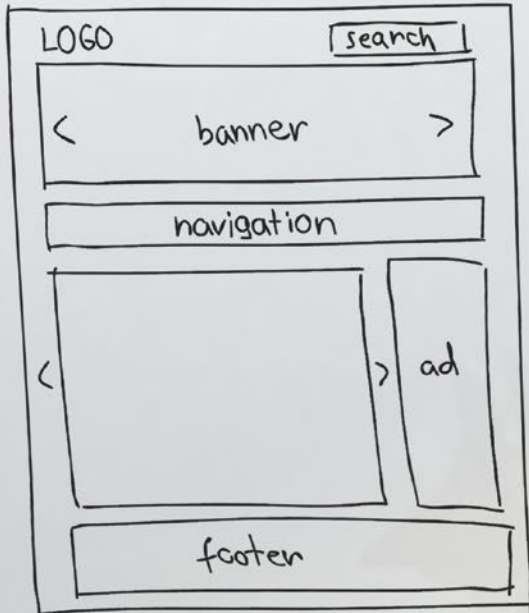
$$2\vec{A} \rightarrow$$

$$\frac{1}{2}\vec{A} \rightarrow$$

$$-1\vec{A} \leftarrow$$

$$-2\vec{A} \leftarrow$$

WEB Design



- Know the Basics
- Design your own website
- beside
- Place of work
- Business plan
- Advertising
- Redesign Existing sites

- ① Keep it simple
 - ② Include a tagline
 - ③ well distributed Content
 - ④ Optimum use of Links
 - ⑤ Easy navigation
 - ⑥ Provide a search box
- GO!



Unity Commercial Glass Wall System

- Turn your blank walls into something extraordinary with purpose. Unity Commercial Glass Wall System is engineered to incorporate the best qualities of magnetic glass markerboards with a modular full wall whiteboard.
- Create a user-friendly room-sized presentation surface. System will elevate your walls with functional whiteboard space, ideal for communication, collaboration, and creativity.
- Glass is available standard in gloss white, or in any of our standard glass colors. Create one sleek monochrome wall, or mix and match for a designer appearance. Custom colors and graphics also available.
- The Unity Commercial Series features slim and modern aluminum trim along the top and bottom edge.
- **Please note:** Glass wall construction cannot accommodate cut outs for outlets or light switches.
- Fifty year limited warranty. SCS Indoor Advantage Gold Certified.

PART NO.	DIMENSIONS	SHIP WT.
GLOSS WHITE		
GWD406-GLOSSWHITE	4H x 6W	79 lbs
GWD408-GLOSSWHITE	4H x 8W	104 lbs
GWD412-GLOSSWHITE	4H x 12W	170 lbs
GWD416-GLOSSWHITE	4H x 16W	224 lbs
GWD608-GLOSSWHITE	6H x 8W	166 lbs
GWD612-GLOSSWHITE	6H x 12W	249 lbs
GWD616-GLOSSWHITE	6H x 16W	332 lbs
GWD620-GLOSSWHITE	6H x 20W	415 lbs
GWD624-GLOSSWHITE	6H x 24W	498 lbs
GWD808-GLOSSWHITE	8H x 8W	216 lbs
GWD812-GLOSSWHITE	8H x 12W	324 lbs
GWD816-GLOSSWHITE	8H x 16W	432 lbs
GWD820-GLOSSWHITE	8H x 20W	540 lbs
GWD824-GLOSSWHITE	8H x 24W	648 lbs
LOW IRON WHITE		
GWD406-WHITE	4H x 6W	79 lbs
GWD408-WHITE	4H x 8W	104 lbs
GWD412-WHITE	4H x 12W	170 lbs
GWD416-WHITE	4H x 16W	224 lbs
GWD608-WHITE	6H x 8W	166 lbs
GWD612-WHITE	6H x 12W	249 lbs
GWD616-WHITE	6H x 16W	332 lbs
GWD620-WHITE	6H x 20W	415 lbs
GWD624-WHITE	6H x 24W	498 lbs
GWD808-WHITE	8H x 8W	216 lbs
GWD812-WHITE	8H x 12W	324 lbs
GWD816-WHITE	8H x 16W	432 lbs
GWD820-WHITE	8H x 20W	540 lbs
GWD824-WHITE	8H x 24W	648 lbs
SPECIFY COLOR		
GWD406-COLOR	4H x 6W	79 lbs
GWD408-COLOR	4H x 8W	104 lbs
GWD412-COLOR	4H x 12W	170 lbs
GWD416-COLOR	4H x 16W	224 lbs
GWD608-COLOR	6H x 8W	166 lbs
GWD612-COLOR	6H x 12W	249 lbs
GWD616-COLOR	6H x 16W	332 lbs
GWD620-COLOR	6H x 20W	415 lbs
GWD624-COLOR	6H x 24W	498 lbs
GWD808-COLOR	8H x 8W	216 lbs
GWD812-COLOR	8H x 12W	324 lbs
GWD816-COLOR	8H x 16W	432 lbs
GWD820-COLOR	8H x 20W	540 lbs
GWD824-COLOR	8H x 24W	648 lbs

VIEW ONLINE

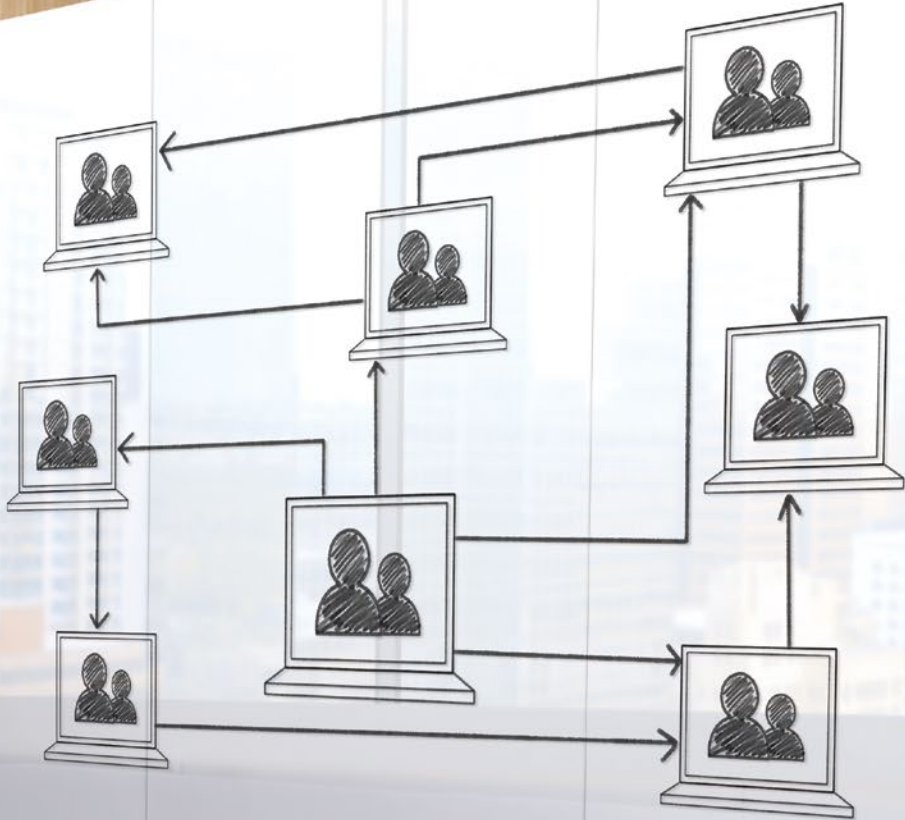
Rapport Basic Glass Wall System

- Turn your blank walls into something extraordinary with purpose. Rapport Basic Glass Wall System is engineered to incorporate the best qualities of magnetic glass markerboards with a modular full wall whiteboard.
- Create a user-friendly room-sized presentation surface. System will elevate your walls with functional whiteboard space, ideal for communication, collaboration, and creativity.
- Glass is available standard in gloss white, or in any of our standard glass colors. Create one sleek monochrome wall, or mix and match for a designer appearance. Custom colors and graphics also available.
- Rapport features stainless steel mounting standoffs along the top edge, and a full-length anodized aluminum accessory tray along the bottom.
- **Please note:** Glass wall construction cannot accommodate cut outs for outlets or light switches.
- Fifty year limited warranty. SCS Indoor Advantage Gold Certified.

PART NO.	DIMENSIONS	SHIP WT.
GLOSS WHITE		
GWA406-GLOSSWHITE	4H x 6'W	79 lbs
GWA408-GLOSSWHITE	4H x 8'W	104 lbs
GWA412-GLOSSWHITE	4H x 12'W	170 lbs
GWA416-GLOSSWHITE	4H x 16'W	224 lbs
LOW IRON WHITE		
GWA406-WHITE	4H x 6'W	79 lbs
GWA408-WHITE	4H x 8'W	104 lbs
GWA412-WHITE	4H x 12'W	170 lbs
GWA416-WHITE	4H x 16'W	224 lbs
SPECIFY COLOR		
GWA406-COLOR	4H x 6'W	79 lbs
GWA408-COLOR	4H x 8'W	104 lbs
GWA412-COLOR	4H x 12'W	170 lbs
GWA416-COLOR	4H x 16'W	224 lbs

[VIEW ONLINE](#)





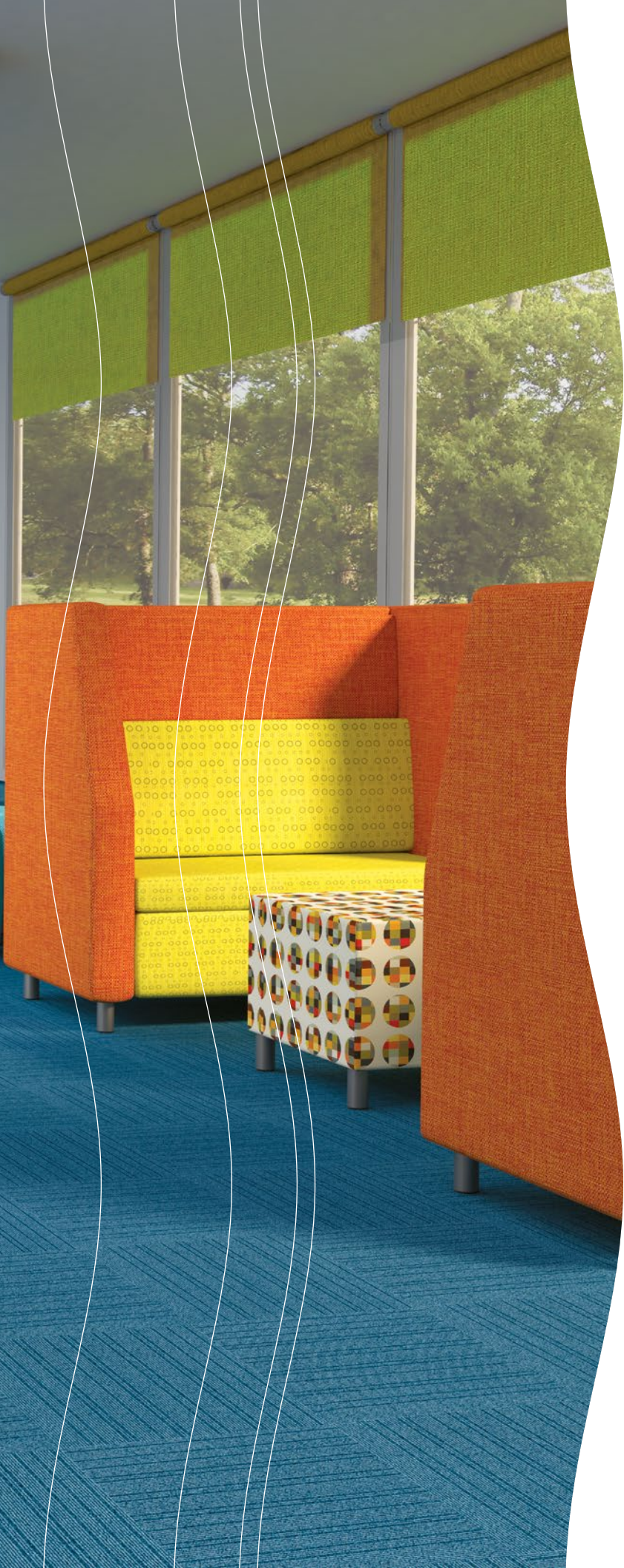
"TAIL WAGGIN' TUESDAY"

Let your child read to a dog
to help build confidence as
well as reading skills!



See any librarian for details
and sign up sheet!





Mix and Match! All reversible glass boards available in two colors!



Hierarchy Grow & Roll Mobile Glass Board

- A colorful board that accommodates all ages. Floor length board is easy to use and works as a space divider as well.
- Ideal for use in collaborative learning environments, the dual-sided magnetic glass markerboard allows for multiple users, while the floor to stand surface maximizes use.
- Available in two sizes. Moves easily wherever you want it.
- Available in all Hierarchy colors and custom colors as well. Mix and match front and back surface for a designer appearance.
- Standard with a platinum frame and dual-wheel swivel casters (two locking).
- SCS Indoor Advantage Gold Certified.

PART NO.	DIMENSIONS	SHIP WT.
SMALL		
84425-WHITE	47.2"H x 35.4"W x 23.5"D	150 lbs
84425-GLOSSWHITE	47.2"H x 35.4"W x 23.5"D	150 lbs
84425-RED	47.2"H x 35.4"W x 23.5"D	150 lbs
84425-ORANGE	47.2"H x 35.4"W x 23.5"D	150 lbs
84425-YELLOW	47.2"H x 35.4"W x 23.5"D	150 lbs
84425-GREEN	47.2"H x 35.4"W x 23.5"D	150 lbs
84425-BLUE	47.2"H x 35.4"W x 23.5"D	150 lbs
84425-NAVY	47.2"H x 35.4"W x 23.5"D	150 lbs
84425-PURPLE	47.2"H x 35.4"W x 23.5"D	150 lbs
LARGE		
84426-WHITE	70.9"H x 47.2"W x 23.5"D	350 lbs
84426-GLOSSWHITE	70.9"H x 47.2"W x 23.5"D	350 lbs
84426-RED	70.9"H x 47.2"W x 23.5"D	350 lbs
84426-ORANGE	70.9"H x 47.2"W x 23.5"D	350 lbs
84426-YELLOW	70.9"H x 47.2"W x 23.5"D	350 lbs
84426-GREEN	70.9"H x 47.2"W x 23.5"D	350 lbs
84426-BLUE	70.9"H x 47.2"W x 23.5"D	350 lbs
84426-NAVY	70.9"H x 47.2"W x 23.5"D	350 lbs
84426-PURPLE	70.9"H x 47.2"W x 23.5"D	350 lbs

VIEW ONLINE

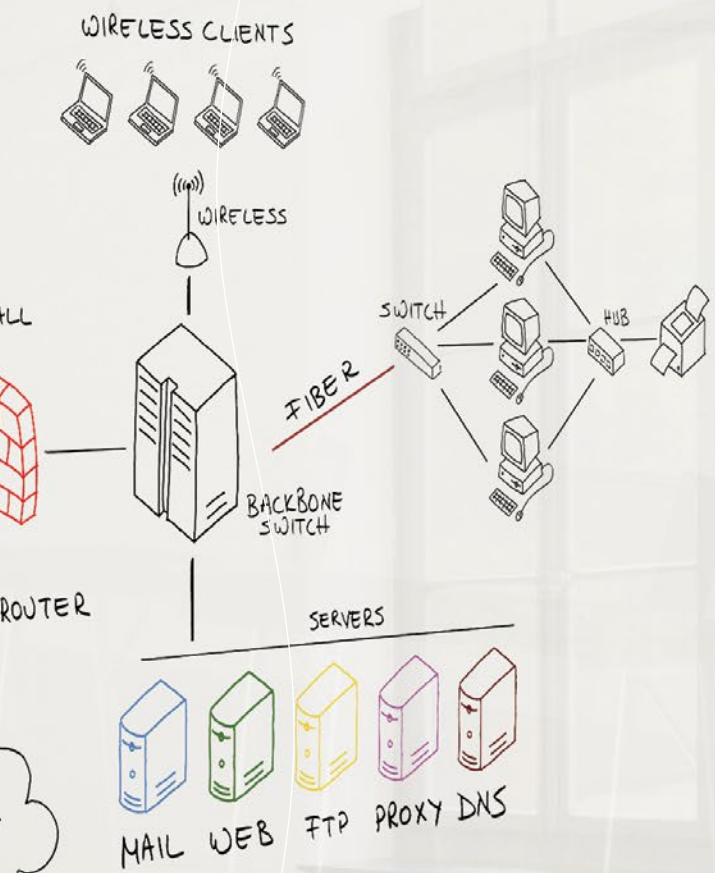
D.O.C. Glass Mobile Room Divider

- Divide and conquer with style. Get all of the functionality of a D.O.C. with a sleek and modern magnetic glass surface.
- Fresh modern style enhances creativity in your work environment. Pairing elegant magnetic glass whiteboard with a mobile aluminum frame, D.O.C. Glass Mobile Room Dividers allow you the freedom to divide, organize, and customize your space to fit your individual needs.
- Modular panels move wherever needed to create whatever space is needed; locking swivel casters keep them in place. Two sizes available for maximum configuration flexibility: 6'H x 4'W or 6'H x 6'W
- Double-sided in tempered safety glass to provide smooth writability and erasability. Glass is backed with steel to accept rare earth magnets.
- Divider comes standard with gloss white glass, but you can customize the glass panel in a variety of ways to personalize your workspace, including color and graphic printing options.
- Panels are trimmed in modern anodized aluminum to best enhance your environment.
- Leg design minimizes gapping, and connectors are available to join panels at or 180° angles. Base includes locking casters.
- Decorative kickplate is finished in your choice of laminates. Choose from one of our standard options or create a custom divider.
- SCS Indoor Advantage Gold Certified.

PART NO.	DIMENSIONS	SHIP WT.
D.O.C. GLASS		
8201D-XXXX	6'H x 4'W	360 lbs
8201G-XXXX	6'H x 6'W	540 lbs

[VIEW ONLINE](#)



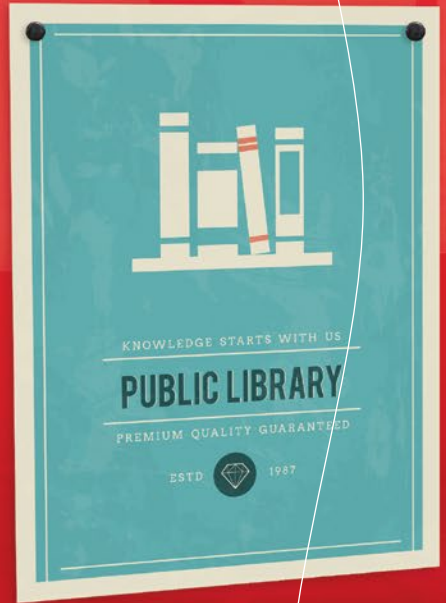


☆ Let's Do Some ☆
Maker Space Exploration!

Create, Design, & Learn

Alice P. Marshall Room
Tuesdays 4:00 - 5:45

Ages 8-13





Mix and Match!

All reversible glass boards available in two colors!



Visionary® Move Mobile Magnetic Glass Board

- Get your ideas on the go—in full color. Mobile glass board moves your info with you wherever you need it.
- Get up to twice the functional space of a wall-mounted board with a versatile and contemporary Visionary Move.
- Ultra durable double-sided glass magnetic markerboard is a contemporary communication tool providing the highest quality writing and erasing experience. Accepts rare earth magnets.
- Smooth finish accepts dry erase, wet erase, chalk markers and more. Tempered safety glass for use in any environment with sturdy steel plate backing.
- Choose from any of our standard glass colors—even mix and match sides for a designer board. Custom colors and graphic printing available.
- Frame and trim are made with platinum powder-coated steel for superior durability.
- Wide base design for stability includes dual-wheel locking casters. Mobile board can be set at either 60-1/2"H or 72-3/4"H for ideal viewing.
- SCS Indoor Advantage Gold Certified.

PART NO.	DIMENSIONS	SHIP WT.
SMALL		
74950-WHITE	72.8"H x 38.3"W x 25.9"D	156 lbs
74950-GLOSSWHITE	72.8"H x 38.3"W x 25.9"D	156 lbs
74950-RED	72.8"H x 38.3"W x 25.9"D	156 lbs
74950-ORANGE	72.8"H x 38.3"W x 25.9"D	156 lbs
74950-YELLOW	72.8"H x 38.3"W x 25.9"D	156 lbs
74950-GREEN	72.8"H x 38.3"W x 25.9"D	156 lbs
74950-BLUE	72.8"H x 38.3"W x 25.9"D	156 lbs
74950-NAVY	72.8"H x 38.3"W x 25.9"D	156 lbs
74950-PURPLE	72.8"H x 38.3"W x 25.9"D	156 lbs
LARGE		
74951-WHITE	72.8"H x 73.1"W x 25.9"D	360 lbs
74951-GLOSSWHITE	72.8"H x 73.1"W x 25.9"D	360 lbs
74951-RED	72.8"H x 73.1"W x 25.9"D	360 lbs
74951-ORANGE	72.8"H x 73.1"W x 25.9"D	360 lbs
74951-YELLOW	72.8"H x 73.1"W x 25.9"D	360 lbs
74951-GREEN	72.8"H x 73.1"W x 25.9"D	360 lbs
74951-BLUE	72.8"H x 73.1"W x 25.9"D	360 lbs
74951-NAVY	72.8"H x 73.1"W x 25.9"D	360 lbs
74951-PURPLE	72.8"H x 73.1"W x 25.9"D	360 lbs

VIEW ONLINE

Mix and Match!

All reversible glass boards available in two colors!

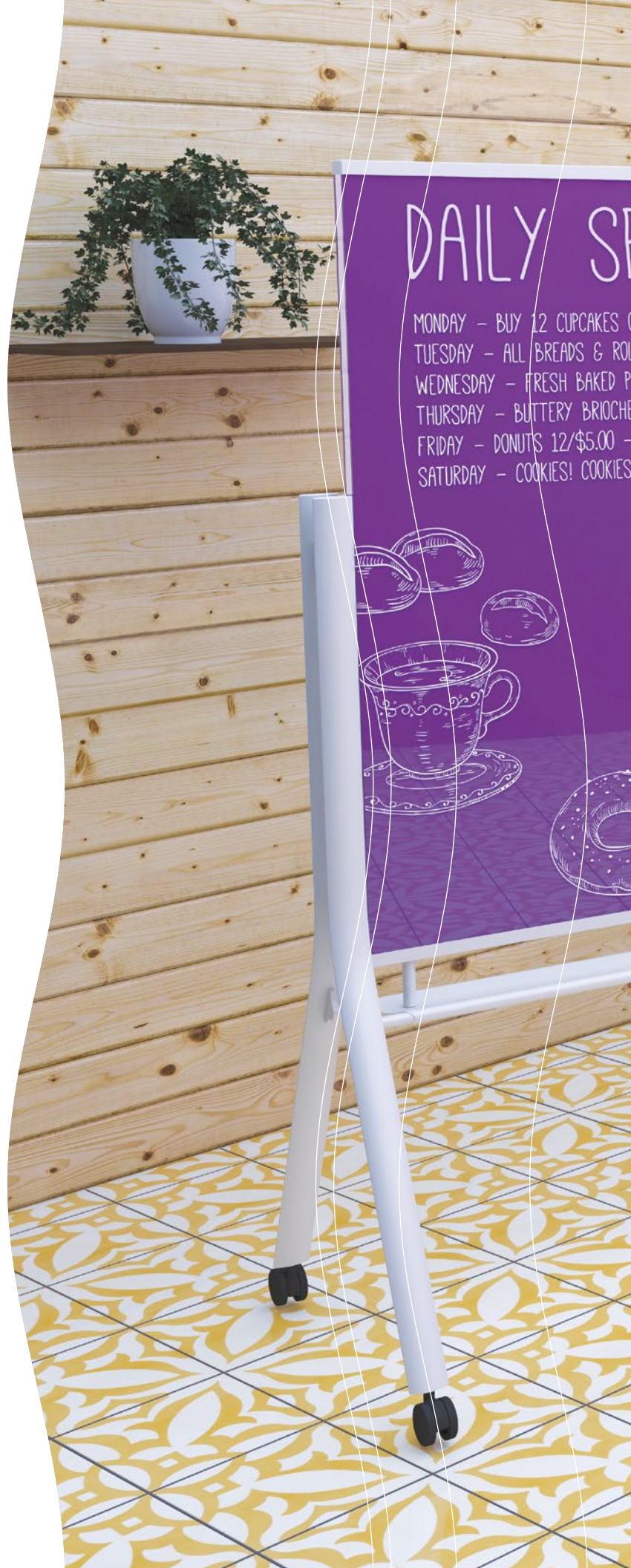


Visionary® Curve Colors Mobile Glass Board

- Get your colors to go. Mobile glass markerboard is stylish and available in multiple color options.
- Get up to twice the functional space of a wall-mounted board with a versatile and stylish Visionary Curve Colors mobile magnetic glass board, with a modern white frame and colored glass options.
- Panel is beautiful and modern double-sided magnetic glass, giving you style as well as a surface that provides unmatched writability and erases without ghosting.
- Glass available in multiple colors. Choose the color that will accent the design of your environment. Mix and match for an even more personalized board. Custom colors and graphics available.
- Tempered safety glass surface measures 47-1/4"H x 35-1/2"W and accepts rare earth magnets.
- Frame and trim are made with white powder-coated steel for superior durability. Wide base design for stability includes dual-wheel locking casters.
- SCS Indoor Advantage Gold Certified.

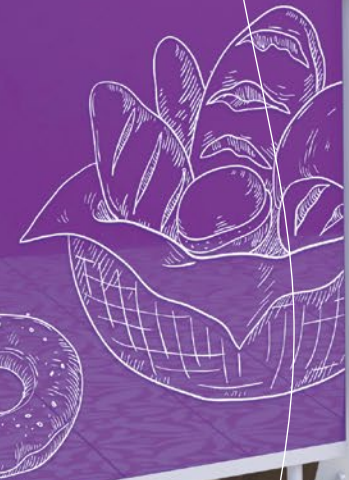
PART NO.	DIMENSIONS	SHIP WT.
VISIONARY CURVE		
74957-WHITE	68.8"H x 36"W x 22.8"D	144 lbs
74957-GLOSSWHITE	68.8"H x 36"W x 22.8"D	144 lbs
74957-RED	68.8"H x 36"W x 22.8"D	144 lbs
74957-ORANGE	68.8"H x 36"W x 22.8"D	144 lbs
74957-YELLOW	68.8"H x 36"W x 22.8"D	144 lbs
74957-GREEN	68.8"H x 36"W x 22.8"D	144 lbs
74957-BLUE	68.8"H x 36"W x 22.8"D	144 lbs
74957-NAVY	68.8"H x 36"W x 22.8"D	144 lbs
74957-PURPLE	68.8"H x 36"W x 22.8"D	144 lbs

[VIEW ONLINE](#)



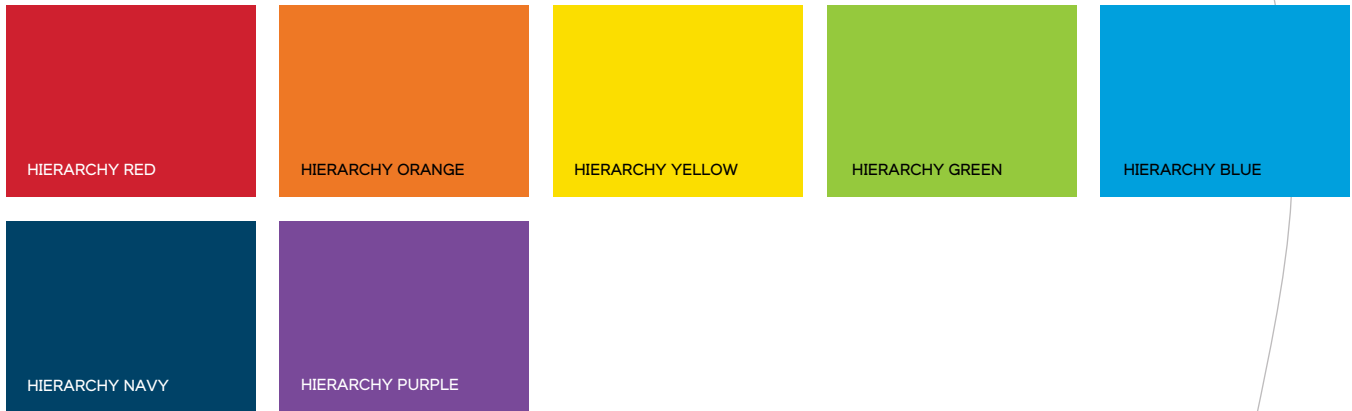
SPECIALS!

BUY 2 GET 1 FREE!
ALL 10% OFF!
PRETZELS 5/\$10
BUY ONE GET ONE 50% OFF!
TAKE BREAKFAST TO WORK!
COOKIES! BUY 12 GET 3 FREE!



Standard Glass Colors:

Hierarchy by MooreCo Collection (QuickShip: most products ship in 10 days or fewer.)



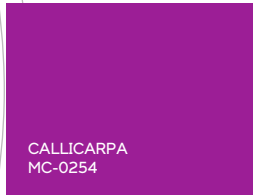
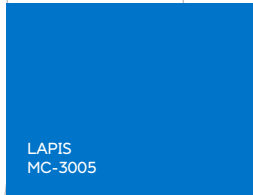
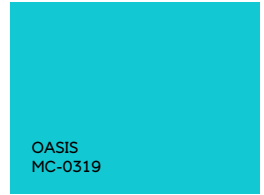
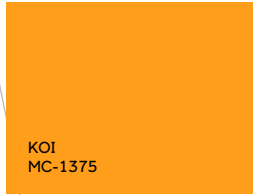
Custom Glass Colors:

The colors in any given space immediately influence mood and mental response, and can be used to foster creativity, focus, relaxation, and more. Because we understand how much goes into choosing just the right colors for your spaces, we are pleased to offer a wide spectrum of custom glass board colors, all available in 90 days or less, with minimal MOQs.

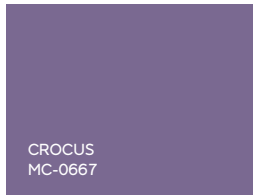
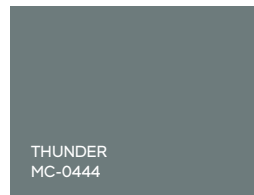
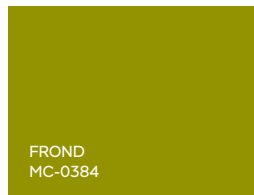
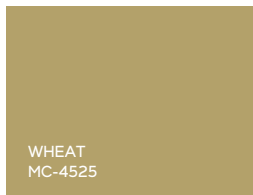
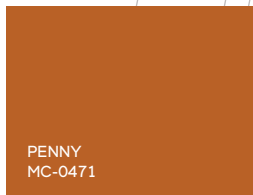
Daybreak Collection



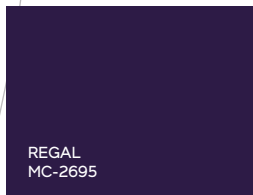
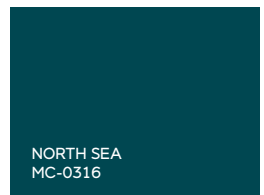
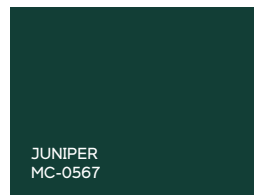
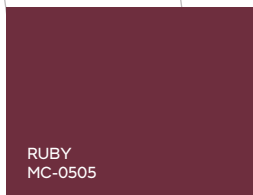
Daylight Collection



Twilight Collection



Midnight Collection



Appendix: Specified Fabrics & Finishes

Please note: fabrics and finishes are chosen for illustration purposes only and do not necessarily represent accurate scale, color, or best purpose of use. Please consult with our professional design team before selecting fabrics and finishes for your space.

Page	Product	Fabric / Finish
4-5	Hierarchy Activity Table	Laminate: Florence Walnut / Edge Band: Custom Brown
6-7	Double Bench	Fabric: Gatsby Zest
8-9	Elate Electric Desk	Laminate: Grey Elm / Edge Band: Platinum
10-11	Modular Conference Table	Laminate: Asian Night / Edge Band: Black
12-13	Avid Instructor Desk	Laminate: Fusion Maple / Edge Band: Platinum
14-15	Frequency X-Base Table	Laminate: Raw Eucalyptus / Edge Band: Self Edge
	Elevate Wind Cube	Fabric: Brink Mission
	Elevate Wind Wedge Pillow	Fabric: Brink Mission
	Elevate Wind Lounge Chair	Fabric: Croquet Navy
16-17	MediaSpace Table - Large	Laminate: Ghost Maple / Edge Band: Black
18-19	Avid Modular Desk	Laminate: Grey Elm / Edge Band: Navy
	Snap Desk	Laminate: Grey Elm / Edge Band: Navy
20-21	Elate Electric Desk	Laminate: Asian Sun / Edge Band: Platinum
22-23	Sofa	Fabric: Faux Mo Marine
	Triple Bench	Fabric: Lucio Ibiza
24-25	High Back Loveseat	Back + Arms: Cover Cloth Navel / Seat: Halo Lemongrass
	Blossom Petals	Fabric: Infinity Rinse
	Blossom Center	Fabric: Infinity Papaya
	Double Bench	Fabric: Cutout Aspen
26-27	D.O.C. Glass	Kickplate: Grey Elm
28-29	Hierarchy Activity Table	Laminate: Grey Elm / Edge Band: Blue, Green, Red
	Schoolworks Bookcase Storage	Laminate: 5th Avenue Elm

Connect With Us:



[instagram.com/mooreco_inc](https://www.instagram.com/mooreco_inc)



[pinterest.com/moorecoinc](https://www.pinterest.com/moorecoinc)



[facebook.com/moorecoinc](https://www.facebook.com/moorecoinc)



[linkedin.com/company/mooreco-inc](https://www.linkedin.com/company/mooreco-inc)



twitter.com/moorecoinc



[youtube.com/moorecoinc](https://www.youtube.com/moorecoinc)



[tiktok.com/@moorecoinc](https://www.tiktok.com/@moorecoinc)



MOORECO™

MooreCo Inc.

2885 Lorraine Avenue | Temple, TX 76501

p: 800.749.2258 | f: 866.888.7483

www.moorecoinc.com