



QuickShip

2025

*Outfit your entire classroom
with products that ship in
10 days or less*



MOORECO™





moorecoinc.com/quickship

*All information in
this guide is effective
January 1, 2025*



MOORECO™

2885 Lorraine Avenue | Temple, TX 76501
p: 800.749.2258 | f: 866.888.7483
www.moorecoinc.com

©2025 MooreCo, Inc. All rights reserved. MooreCo reserves the right to correct pricing and/or copy errors. Due to the current volatility in the price of raw and finished materials, please refer to our latest online price guides for pricing and shipping information.





*Consciously designed
educational furnishings
available to ship in
10 days or less*

Our Thrive Philosophy embraces the importance of flexibility and collaboration in any learning environment, and our new QuickShip program has been carefully curated to offer a variety of products that truly accommodate the needs of students and teachers, no matter the age or learning style.

Considering the six key aspects of human development, our QuickShip program now allows consciously designed environments with products shipping in 10 days or less.



moorecoinc.com/thrive

Desks & Tables: Porcelain Steel

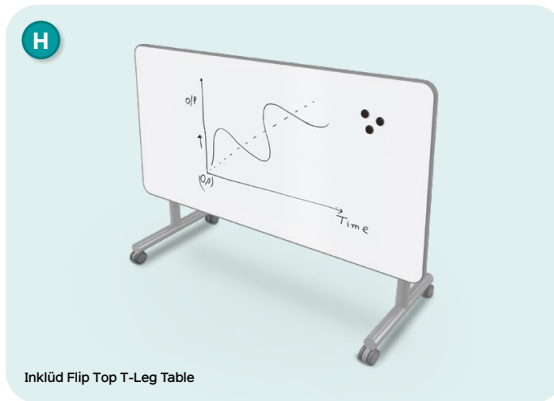
Porcelain Steel



Scan for more on porcelain top benefits!

- Porcelain steel whiteboard provides space for doodling, jotting down notes and ideas, and brainstorming. Surface accepts magnets for even more versatility.
- Porcelain steel reduces ambient reflection and glare over standard HPL markerboard, providing a more comfortable to use writing surface. Porcelain also has superior erasability, and comes with a lifetime guarantee.
- Tests show our 24-gauge porcelain is more than twice as hard, and twice as scratch-resistant as laminate, reducing dents, dings, and other damage. Surface is also 5.5 times more wear-resistant than laminate.
- Erasability is more than twice as good on a porcelain surface versus laminate dry erase surface, and holds up to use, showing better erasability over time.
- Porcelain resists delamination, keeping dry erasability intact for the life of the desk.
- Porcelain steel tops come with molded polypropylene edge banding in charcoal. Edge is slightly raised for a fully encapsulated top, ensuring no sharp edges are exposed, and steel will not rust.

Part No.	Description	Dimensions
A. Hierarchy Beam Desk + Porcelain Steel Top		
59077-66692-PORC-CHAR	Platinum Legs (Standard)	18" - 29"H x 34.4"W x 23.9"D
59077-66692K-PORC-CHAR	Platinum Legs (Youth)	12" - 18"H x 34.4"W x 23.9"D
B. Hierarchy Creator Rectangle Desk + Porcelain Steel Top		
70529	Platinum Legs (Standard)	18" - 29"H x 32.1"W x 21.4"D
70529K	Platinum Legs (Youth)	12" - 18"H x 32.1"W x 21.4"D
C. Hierarchy Rectangle Desk (2620) + Porcelain Steel Top		
59078-66692-PORC-CHAR	Platinum Legs (Standard)	18" - 29"H x 26"W x 20"D
59078-66692K-PORC-CHAR	Platinum Legs (Youth)	12" - 18"H x 26"W x 20"D
D. Hierarchy Shapes Desk + Porcelain Steel Top		
70523	Platinum Legs (Standard)	18" - 29"H x 29.9"W x 28.4"D
70523K	Platinum Legs (Youth)	12" - 18"H x 29.9"W x 28.4"D
E. Hierarchy Activity Kidney Table + Porcelain Steel Top		
59079-66692-PORC-CHAR	Platinum Legs (Standard)	18" - 29"H x 72"W x 48"D
59079-66692K-PORC-CHAR	Platinum Legs (Youth)	12" - 18"H x 72"W x 48"D
F. Hierarchy Activity Rectangle Table + Porcelain Steel Top		
70525	Platinum Legs (Standard)	18" - 29"H x 60"W x 30"D
70525K	Platinum Legs (Youth)	12" - 18"H x 60"W x 30"D
G. Hierarchy Creator Rectangle Table + Porcelain Steel Top		
70527	Platinum Legs (Standard)	18" - 29"H x 57.9"W x 30.8"D
70527K	Platinum Legs (Youth)	12" - 18"H x 57.9"W x 30.8"D
H. Inklüd Table + Porcelain Steel Top		
IN1T1FOADJ-PORC-CHAR	29"H Flip Top T-Leg / Casters	29"H x 60"W x 30"D
IN1T1SOADJ-PORC-CHAR	29"H Fixed Height T-Leg / Casters	29"H x 60"W x 30"D



Desks: Laminate

Desks in 5 Days!

Bring style and substance to your classroom in no time with our packed line of QuickShip desks. Featuring five models in three different finishes, our line is designed to give you maximum impact with minimal lead times. Each option comes with matching edge band, providing elevated style, allowing you to create educational spaces that will enhance and encourage learning.

- **Hierarchy Desks:** Available in standard or youth heights, with platinum legs, Hierarchy desks offer configurability for custom layouts, designed to accommodate left- and right-handed users.
- **Avid Single Pedestal Desk:** Designed for the instructor, with a generous top and convenient storage, the Avid desk system makes creating your ideal workspace a breeze. Platinum base adds style to any space with a pedestal with drawer and box storage, providing a place to keep files and supplies.



Grey Elm + Matching Edge



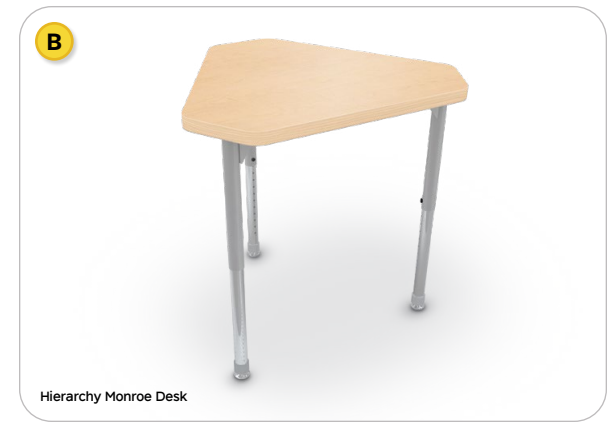
Fusion Maple + Matching Edge



New!
Neutral Weft + Matching Edge



Hierarchy Creator Rectangle Desk



Hierarchy Monroe Desk



Hierarchy Rectangle Desk

Part No.	Description	Dimensions
A. Hierarchy Creator Rectangle Desk		
1643H8201-8201	Grey Elm + Matching Edge (Standard)	18" - 29"H x 32.1"W x 21.4"D
1643H7909-7909	Fusion Maple + Matching Edge (Standard)	18" - 29"H x 32.1"W x 21.4"D
1643H5875-5875	Neutral Weft + Matching Edge (Standard)	18" - 29"H x 32.1"W x 21.4"D
1663H8201-8201	Grey Elm + Matching Edge (Youth)	12" - 18"H x 32.1"W x 21.4"D
1663H7909-7909	Fusion Maple + Matching Edge (Youth)	12" - 18"H x 32.1"W x 21.4"D
1663H5875-5875	Neutral Weft + Matching Edge (Youth)	12" - 18"H x 32.1"W x 21.4"D
B. Hierarchy Monroe Desk (Small)		
1743H8201-8201	Grey Elm + Matching Edge (Standard)	18" - 29"H x 29.7"W x 26.6"D
1743H7909-7909	Fusion Maple + Matching Edge (Standard)	18" - 29"H x 29.7"W x 26.6"D
1743H5875-5875	Neutral Weft + Matching Edge (Standard)	18" - 29"H x 29.7"W x 26.6"D
1763H8201-8201	Grey Elm + Matching Edge (Youth)	12" - 18"H x 29.7"W x 26.6"D
1763H7909-7909	Fusion Maple + Matching Edge (Youth)	12" - 18"H x 29.7"W x 26.6"D
1763H5875-5875	Neutral Weft + Matching Edge (Youth)	12" - 18"H x 29.7"W x 26.6"D
C. Hierarchy Rectangle Desk (2920)		
104318201-8201	Grey Elm + Matching Edge (Standard)	18" - 29"H x 29"W x 20"D
104317909-7909	Fusion Maple + Matching Edge (Standard)	18" - 29"H x 29"W x 20"D
104315875-5875	Neutral Weft + Matching Edge (Standard)	18" - 29"H x 29"W x 20"D
106318201-8201	Grey Elm + Matching Edge (Youth)	12" - 18"H x 29"W x 20"D
106317909-7909	Fusion Maple + Matching Edge (Youth)	12" - 18"H x 29"W x 20"D
106315875-5875	Neutral Weft + Matching Edge (Youth)	12" - 18"H x 29"W x 20"D
D. Hierarchy Shapes Desk (Standard)		
114368201-8201	Grey Elm + Matching Edge (Standard)	18" - 29"H x 29.9"W x 28.4"D
114367909-7909	Fusion Maple + Matching Edge (Standard)	18" - 29"H x 29.9"W x 28.4"D
114365875-5875	Neutral Weft + Matching Edge (Standard)	18" - 29"H x 29.9"W x 28.4"D
116368201-8201	Grey Elm + Matching Edge (Youth)	12" - 18"H x 29.9"W x 28.4"D
116367909-7909	Fusion Maple + Matching Edge (Youth)	12" - 18"H x 29.9"W x 28.4"D
E. Avid Single Pedestal Desk		
91774-8201-8201	Grey Elm + Matching Edge	29.8"H x 60"W x 30"D
91774-7909-7909	Fusion Maple + Matching Edge	29.8"H x 60"W x 30"D
91774-5875-5875	Neutral Weft + Matching Edge	29.8"H x 60"W x 30"D

D



Hierarchy Shapes Desk

E



Avid Single Pedestal Desk



	Simple/ Indefinite	Continuous/ Progressive	Perfect	Perfect Continuous
Present	I play	I am playing	I have played	I have been playing
Past	I played	I was playing	I had played	I had been playing
Future	I will play	I will be playing	I will have played	I will have been playing

Desks: Lamininate

Tables: Laminate

Tables in 5 Days!

Group learning and sharing is yours in no time with our packed line of QuickShip tables. Featuring five models in three different finishes, our line is designed to give you maximum impact with minimal lead times. Each option comes with matching edge band, providing elevated style, allowing you to create educational spaces that will enhance and encourage learning.

- **Hierarchy Tables:** Available in standard or youth heights, with platinum legs, Hierarchy tables offer configurability for custom layouts, designed to activities and groups of all sizes.
- **Inklüd™ Tables:** Inspire and involve with Inklüd! This deceptively simple family of training and collaborative tables features a tubular platinum base with superior mechanics, elevating any environment with a sleek and modern profile.



Grey Elm + Matching Edge



Fusion Maple + Matching Edge



New!
Neutral Weft + Matching Edge



Hierarchy Activity Kidney Table



Hierarchy Activity Rectangle Table



Hierarchy Creator Rectangle Table

Part No.	Description	Dimensions
A. Hierarchy Activity Kidney Table		
66682-V-8201-8201	Grey Elm + Matching Edge (Standard)	18" - 29"H x 72"W x 48"D
66682-V-7909-7909	Fusion Maple + Matching Edge (Standard)	18" - 29"H x 72"W x 48"D
66682-V-5875-5875	Neutral Weft + Matching Edge (Standard)	18" - 29"H x 72"W x 48"D
66682K-V-8201-8201	Grey Elm + Matching Edge (Youth)	12" - 18"H x 72"W x 48"D
66682K-V-7909-7909	Fusion Maple + Matching Edge (Youth)	12" - 18"H x 72"W x 48"D
66682K-V-5875-5875	Neutral Weft + Matching Edge (Youth)	12" - 18"H x 72"W x 48"D
B. Hierarchy Activity Rectangle Table		
66682-E-8201-8201	Grey Elm + Matching Edge (Standard)	18" - 29"H x 60"W x 30"D
66682-E-7909-7909	Fusion Maple + Matching Edge (Standard)	18" - 29"H x 60"W x 30"D
66682-E-5875-5875	Neutral Weft + Matching Edge (Standard)	18" - 29"H x 60"W x 30"D
66682K-E-8201-8201	Grey Elm + Matching Edge (Youth)	12" - 18"H x 60"W x 30"D
66682K-E-7909-7909	Fusion Maple + Matching Edge (Youth)	12" - 18"H x 60"W x 30"D
66682K-E-5875-5875	Neutral Weft + Matching Edge (Youth)	12" - 18"H x 60"W x 30"D
C. Hierarchy Creator Rectangle Table		
1643Q8201-8201	Grey Elm + Matching Edge (Standard)	18" - 29"H x 57.9"W x 30.8"D
1643Q7909-7909	Fusion Maple + Matching Edge (Standard)	18" - 29"H x 57.9"W x 30.8"D
1643Q5875-5875	Neutral Weft + Matching Edge (Standard)	18" - 29"H x 57.9"W x 30.8"D
1663Q8201-8201	Grey Elm + Matching Edge (Youth)	12" - 18"H x 57.9"W x 30.8"D
1663Q7909-7909	Fusion Maple + Matching Edge (Youth)	12" - 18"H x 57.9"W x 30.8"D
1663Q5875-5875	Neutral Weft + Matching Edge (Youth)	12" - 18"H x 57.9"W x 30.8"D
D. Inklüd Flip Top T-Leg Table + Casters		
IN1T1FOADJ-8201-8201	Grey Elm + Matching Edge	29"H x 60"W x 30"D
IN1T1FOADJ-7909-7909	Fusion Maple + Matching Edge	29"H x 60"W x 30"D
IN1T1FOADJ-5875-5875	Neutral Weft + Matching Edge	29"H x 60"W x 30"D
E. Inklüd Fixed Height T-Leg Table + Casters		
IN1T1S0ADJ-8201-8201	Grey Elm + Matching Edge	29"H x 60"W x 30"D
IN1T1S0ADJ-7909-7909	Fusion Maple + Matching Edge	29"H x 60"W x 30"D
IN1T1S0ADJ-5875-5875	Neutral Weft + Matching Edge	29"H x 60"W x 30"D

D



Inklüd Flip Top T-Leg Table

E



Inklüd Fixed Height T-Leg Table



Chairs & Stools

Chairs + Stools

Multiple seating options for all styles and ages of learners, in stock to ship to you within five days.

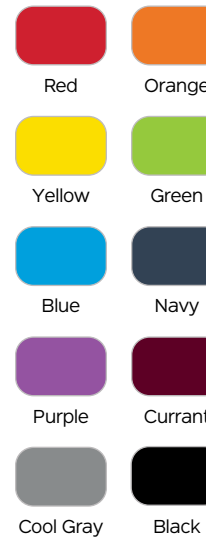
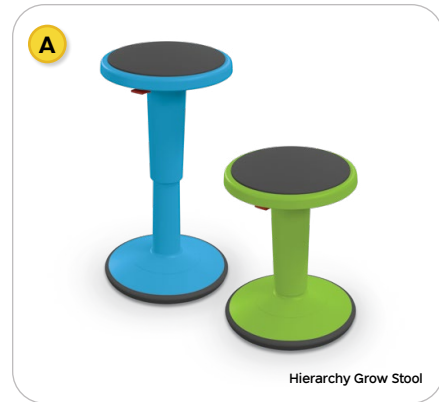
A. Hierarchy Grow Stool®: Available in all stock colors, in two sizes for any age student.

B. Hierarchy Flipz Stool: Cute and colorful stool features built-in storage and goes from flat to rocking.

C. Hierarchy 4-Leg Chair: Designed to fit all ages, in four seat heights and two base finishes.

D. Hierarchy 5-Star Chair: Easy mobility for instructors or older students, in any color.

Part No.	Description	Dimensions
A. Hierarchy Grow Stool		
50960-XXXX	Short (specify color)	14" - 18"H × 13"W × 13"D
50970-XXXX	Tall (specify color)	17" - 24"H × 13"W × 13"D
B. Hierarchy Flipz Stool		
83464-XXXX	Flipz (specify color)	17.1"H × 12"W × 12"D
C. Hierarchy 4-Leg Chair		
53312-1-XXXX-NA-CH	12" - Chrome (specify color)	24"H × 16"W × 17"D
53314-1-XXXX-NA-CH	14" - Chrome (specify color)	25.5"H × 17"W × 17.5"D
53316-1-XXXX-NA-CH	16" - Chrome (specify color)	31.8"H × 18.5"W × 20.3"D
53318-1-XXXX-NA-CH	18" - Chrome (specify color)	33.5"H × 18.8"W × 22"D
53312-1-XXXX-NA-PL	12" - Platinum (specify color)	24"H × 16"W × 17"D
53314-1-XXXX-NA-PL	14" - Platinum (specify color)	25.5"H × 17"W × 17.5"D
53316-1-XXXX-NA-PL	16" - Platinum (specify color)	31.8"H × 18.5"W × 20.3"D
53318-1-XXXX-NA-PL	18" - Platinum (specify color)	33.5"H × 18.8"W × 22"D
D. Hierarchy 5-Star Chair		
53511-XXXX-NA-HC	Hard Caster (specify color)	31" - 36"H × 24"W × 24"D





Tech + AV

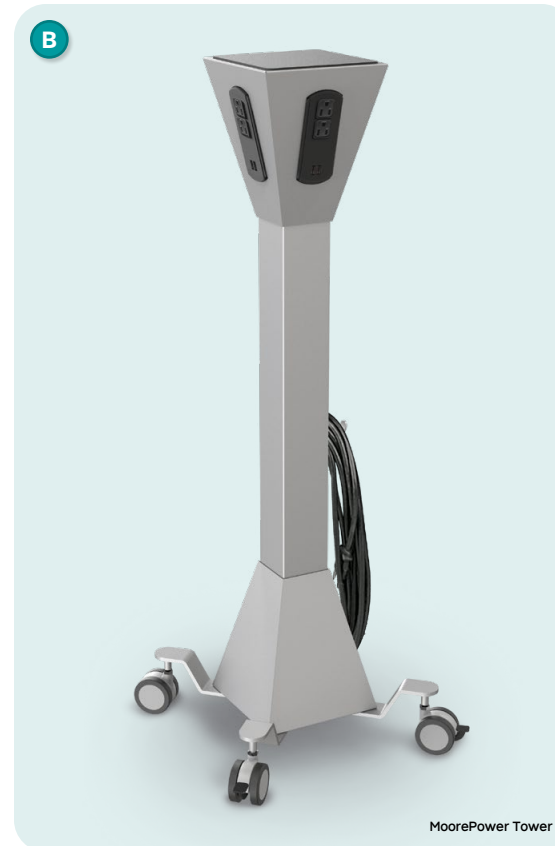
Bringing you the best and fastest technology for your classroom, designed to promote sharing, participation, and interactivity.

A. iTeach® Spider Flat Panel Cart: Choose from either electric adjust or manual adjust models, and get mobility to engage your audience at any time, in any environment.

B. MoorePower® Tower: Power your pods and groups with the handy power tower, featuring AC power and USB charging ports. The 13-½' cable provides flexible positioning.



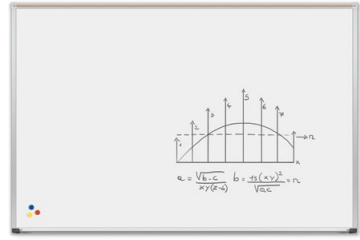
Part No.	Description	Dimensions
A. iTeach Spider Flat Panel Cart		
37675	Electric Adjust	75" - 98"H × 58"W × 30.3"D
37650	Manual Adjust	74"H × 58"W × 30.3"D
B. MoorePower Tower		
27735	MoorePower Tower	40"H × 17.5"W × 17.5"D



Visual Communication

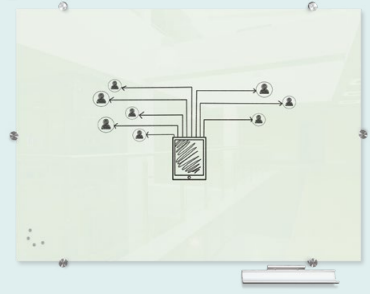


A



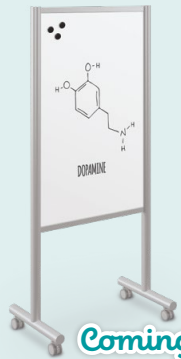
Porcelain Steel Whiteboard + Deluxe Aluminum Trim

B



Visionary Glass Board

E



Coming Soon!

Inkiüd Mobile Whiteboard

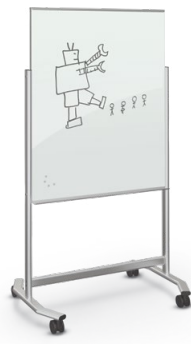
E



Coming Soon!

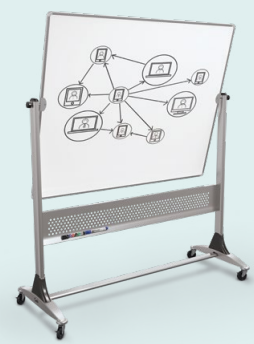
Inkiüd Mobile Room Divider

G

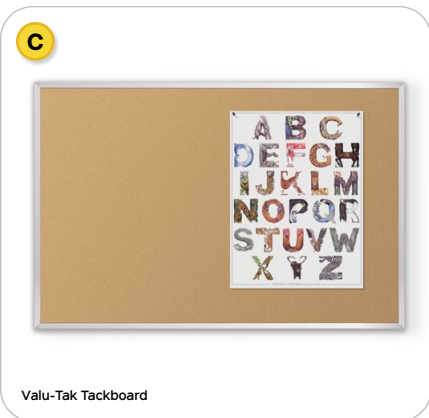


Visionary Move Mobile Board

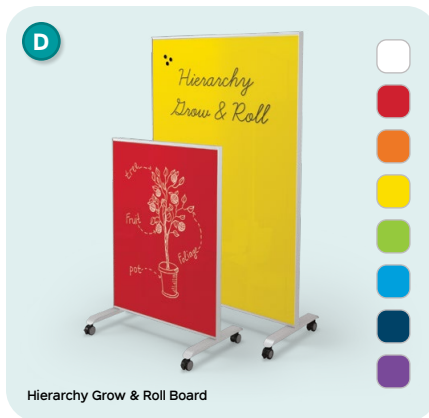
H



Platinum Mobile Reversible Board



Valu-Tak Tackboard



Hierarchy Grow & Roll Board



Essentials Mobile Whiteboard



Nest Easel

Part No.	Description	Dimensions
A. Porcelain Steel Whiteboard - Deluxe Aluminum Trim		
202AD	Porcelain Steel Whiteboard	4'H x 4'W
202AG	Porcelain Steel Whiteboard	4'H x 6'W
202AH	Porcelain Steel Whiteboard	4'H x 8'W
202AK	Porcelain Steel Whiteboard	4'H x 10'W
202AM	Porcelain Steel Whiteboard	4'H x 12'W
202AP	Porcelain Steel Whiteboard	4'H x 16'W
B. Visionary Magnetic Glass Board		
83843	Visionary Board (Gloss White)	23.6"H x 35.4"W
83844	Visionary Board (Gloss White)	35.4"H x 47.2"W
83841	Visionary Board (Gloss White)	47.2"H x 47.2"W
83845	Visionary Board (Gloss White)	47.2"H x 70.9"W
83846	Visionary Board (Gloss White)	47.2"H x 94.5"W
C. Valu-Tak Natural Cork Tackboard		
301AD	Valu-Tak Board	4'H x 4'W
301AF	Valu-Tak Board	4'H x 5'W
301AG	Valu-Tak Board	4'H x 6'W
301AH	Valu-Tak Board	4'H x 8'W
D. Hierarchy Grow & Roll Mobile Board		
84425-XXXX	Small (specify color)	47.2"H x 35.4"W x 23.5"D
84426-XXXX	Large (specify color)	70.9"H x 47.2"W x 23.5"D
E. Inklüd Mobile Boards		
COMING SOON	Inklüd Mobile Whiteboard	72.3"H x 30"W x 22"D
COMING SOON	Inklüd Mobile Room Divider	72.3"H x 72.3"W x 22"D
F. Essentials Mobile Whiteboard		
62542		71.8"H x 42"W x 21"D
G. Visionary Move Mobile Board		
74950-GLOSSWHITE	Small - Gloss White	72.8"H x 38.3"W x 25.9"D
H. Platinum Mobile Reversible Board		
669RG-DD	Porcelain Steel	4'H x 6'W
669RG-HH	Dura-Rite	4'H x 6'W
I. Nest Easel		
785P	Silver	72"H x 34.8"W x 24"D

Visual Communication

Visual communication products that promote inclusivity, learning, and sharing, all available to ship within five days.

- A. Porcelain Steel Whiteboard:** Superior porcelain steel board with a full-length accessory tray and tackable map rail.
- B. Visionary® Glass Board:** Modern magnetic glass board features clean erasability and a ghost-free surface.
- C. Valu-Tak Tackboard:** Versatile natural cork surface provides space for artwork, posters, notices and more.
- D. Hierarchy Grow & Roll Board:** Mobile magnetic glass board brings a variety of colorful options, engaging learners.
- E. Inklüd™ Mobile Boards: Coming Soon!** Designed to coordinate with the Inklüd Table for a clean and smart appearance, these porcelain board offers mobile learning and sharing. Available as a mobile board or a mobile room divider. Coming in 2025.
- F. Essentials Mobile Whiteboard:** Porcelain steel mobile board brings you function with economy.
- G. Visionary® Move Mobile Board:** Mobile glass magnetic surface that mounts at two heights..
- H. Platinum Mobile Reversible Board:** Full size whiteboard that flips 360° and moves easily anywhere it's needed.
- I. Nest Easel:** Compact and easy to move mobile porcelain board with integrated storage box..

Storage & Organization

Compass Makerspace Cabinets

- Empowering students to think, create, and do! Our extensive line of modular cabinets leads to fun and discovery.
- Offering virtually endless configuration options, Compass cabinets are designed to bring your maker space, classroom, or collaboratorium maximum activity flexibility, with a wide range of storage options, tops, and accessories.
- Available to ship in 10 days or less in our most popular models, providing multiple options for storing supplies, tools, and materials.
- Side panels and optional handles are available in your choice of color.
- Choose from interior configurations of shelves or tote drawers. Add doors, or choose open storage. Standard back version features a platinum metal back panel, with durable casters for easy mobility and configurability.
- **Please note:** QuickShip Compass Cabinets are limited to 20 pieces at a time.



Part No.	Description	Dimensions
A. Compass Mini H3 Cabinet		
C1A1X4A1X0	Standard Back / Standard Side / Doors / 3" Totes / Casters / No Handles	51.1"H × 14.8"W × 19.2"D
C1A1X4A1F0	Standard Back / Standard Side / Doors / 3" Totes / Casters / Handles	53.6"H × 14.8"W × 19.2"D
C1A1X4D1X0	Standard Back / Standard Side / Doors / Shelves / Casters / No Handles	51.1"H × 14.8"W × 19.2"D
C1A1X4D1F0	Standard Back / Standard Side / Doors / Shelves / Casters / Handles	53.6"H × 14.8"W × 19.2"D
C1A1X1A1X0	Standard Back / Standard Side / No Doors / 3" Totes / Casters / No Handles	51.1"H × 14.8"W × 19.2"D
C1A1X1A1F0	Standard Back / Standard Side / No Doors / 3" Totes / Casters / Handles	53.6"H × 14.8"W × 19.2"D
C1A1X1D1X0	Standard Back / Standard Side / No Doors / Shelves / Casters / No Handles	51.1"H × 14.8"W × 19.2"D
C1A1X1D1F0	Standard Back / Standard Side / No Doors / Shelves / Casters / Handles	53.6"H × 14.8"W × 19.2"D
B. Compass Midi H3 Cabinet		
C2A1X2A1X0	Standard Back / Standard Side / Doors / 3" Totes / Casters / No Handles	51.1"H × 28.4"W × 19.2"D
C2A1X2A1F0	Standard Back / Standard Side / Doors / 3" Totes / Casters / Handles	53.6"H × 28.4"W × 19.2"D
C2A1X2D1X0	Standard Back / Standard Side / Doors / Shelves / Casters / No Handles	51.1"H × 28.4"W × 19.2"D
C2A1X2D1F0	Standard Back / Standard Side / Doors / Shelves / Casters / Handles	53.6"H × 28.4"W × 19.2"D
C2A1X1A1X0	Standard Back / Standard Side / No Doors / 3" Totes / Casters / No Handles	51.1"H × 28.4"W × 19.2"D
C2A1X1A1F0	Standard Back / Standard Side / No Doors / 3" Totes / Casters / Handles	53.6"H × 28.4"W × 19.2"D
C2A1X1D1X0	Standard Back / Standard Side / No Doors / Shelves / Casters / No Handles	51.1"H × 28.4"W × 19.2"D
C2A1X1D1F0	Standard Back / Standard Side / No Doors / Shelves / Casters / Handles	53.6"H × 28.4"W × 19.2"D
C. Compass Maxi H3 Cabinet		
C3A1X2A1X0	Standard Back / Standard Side / Doors / 3" Totes / Casters / No Handles	51.1"H × 42"W × 19.2"D
C3A1X2A1F0	Standard Back / Standard Side / Doors / 3" Totes / Casters / Handles	53.6"H × 42"W × 19.2"D
C3A1X2D1X0	Standard Back / Standard Side / Doors / Shelves / Casters / No Handles	51.1"H × 42"W × 19.2"D
C3A1X2D1F0	Standard Back / Standard Side / Doors / Shelves / Casters / Handles	53.6"H × 42"W × 19.2"D
C3A1X1A1X0	Standard Back / Standard Side / No Doors / 3" Totes / Casters / No Handles	51.1"H × 42"W × 19.2"D
C3A1X1A1F0	Standard Back / Standard Side / No Doors / 3" Totes / Casters / Handles	53.6"H × 42"W × 19.2"D
C3A1X1D1X0	Standard Back / Standard Side / No Doors / Shelves / Casters / No Handles	51.1"H × 42"W × 19.2"D
C3A1X1D1F0	Standard Back / Standard Side / No Doors / Shelves / Casters / Handles	53.6"H × 42"W × 19.2"D





Storage & Organization



Soft Seating & Lounge

Adding soft seating to your spaces adds to a user's sensory experience, improving calmness, focus, and reducing tension. Choose from a variety of ways to affirm positive feelings in your environments, ready to ship within 10 days.

Please note: QuickShip soft seating is limited to 20 pieces at a time. Multiple fabric availability will be based on quantity and pieces ordered. Contact us for more details.

- **Dot Rocking Stool (A):** Rocking motion created by a smooth black base allows these cylindrical soft seats to create rhythmic micro-movements that help release excess energy.
- **Soft Seating Seat Pad (B & C):** Available in multiple sizes, full-foam construction seat pads are ideal for use as floor cushions or extra padding on harder seats. Coming soon in sets of five.
- **Dot Cart (D):** Available in four sizes, the Dot Cart is perfect storage for smaller dots or soft seating seat pads.
- **Soft Seating Stools (E-G):** Choose from our comfy Pouf with glides, or choose a soft square or round stool, available in three sizes with aluminum legs.
- **Blossom Set (H):** Put a smile on your space with adorable flower soft seating, available in mix and match fabrics.
- **Soft Sway Rocking Chair (I):** In two sizes for adults or kids, the Soft Sway will provide soothing movement and comfort.

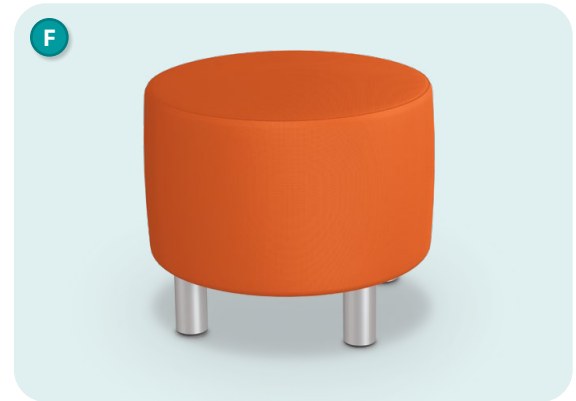
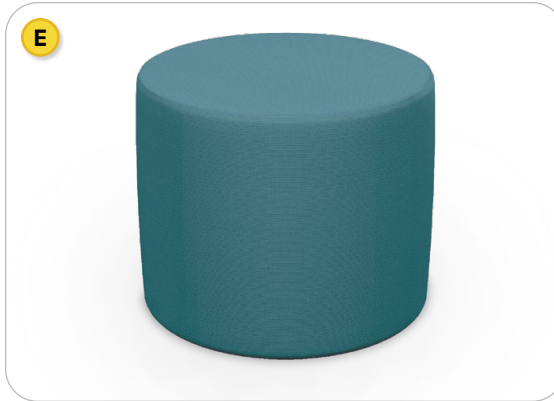


Part No.	Description	Dimensions
A. Dot Rocking Stool		
97R105-VX-XXXX	15" - Extra Low	5"H x 15"W x 15"D
97R112-VX-XXXX	15" - Low	12"H x 15"W x 15"D
97R115-VX-XXXX	15" - Medium	15"H x 15"W x 15"D
97R118-VX-XXXX	15" - High	18"H x 15"W x 15"D
96R105-VX-XXXX	18" - Extra Low	5"H x 18"W x 18"D
96R112-VX-XXXX	18" - Low	12"H x 18"W x 18"D
96R115-VX-XXXX	18" - Medium	15"H x 18"W x 18"D
96R118-VX-XXXX	18" - High	18"H x 18"W x 18"D
B. Soft Seating Seat Pad		
115R3-VX-XXXX	Round 15" - Extra Low	3"H x 15"W x 15"D
115R5-VX-XXXX	Round 15" - Low	5"H x 15"W x 15"D
118R3-VX-XXXX	Round 18" - Extra Low	3"H x 18"W x 18"D
118R5-VX-XXXX	Round 18" - Low	5"H x 18"W x 18"D
115R3-VX-XXXX	Square 15" - Extra Low	3"H x 15"W x 15"D
115R5-VX-XXXX	Square 15" - Low	5"H x 15"W x 15"D
118R3-VX-XXXX	Square 18" - Extra Low	3"H x 18"W x 18"D
118R5-VX-XXXX	Square 18" - Low	5"H x 18"W x 18"D
C. Soft Seating Seat Pad 5-Pack		
COMING SOON	Round (5-Pack)	3"H x 15"W x 15"D
COMING SOON	Square (5-Pack)	3"H x 15"W x 15"D
D. Dot Cart		
20702	Single (for 15" Dots)	31.8"H x 17"W x 17"D
20703	Double (for 15" Dots)	31.8"H x 33"W x 17"D
20704	Single (for 18" Dots)	31.8"H x 20"W x 20"D
20705	Double (for 18" Dots)	31.8"H x 39"W x 20"D

QuickShip Fabric Options:



Handy cart holds Dots and Seat Pads for tidy storage!



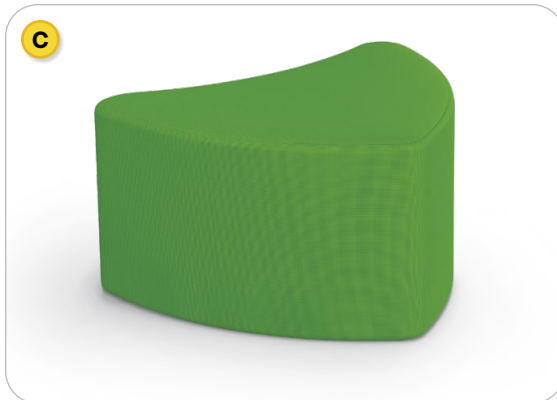
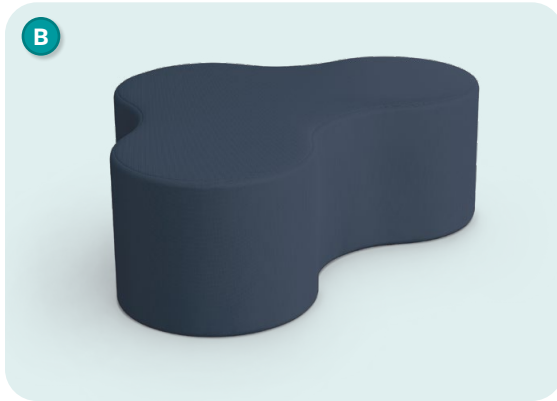
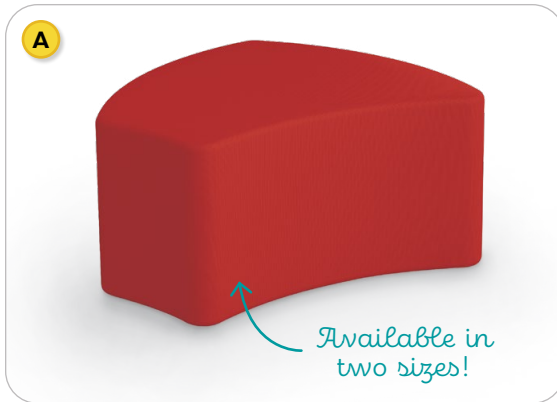
Available in two sizes!



Choose from any QuickShip fabric for petals and center!

Part No.	Description	Dimensions
E. Pouf Stool		
970-XXXX	Pouf Stool	18"H x 18"W x 18"D
F. Round Stool		
980L-XXXX	Low	15"H x 18"W x 18"D
980M-XXXX	Medium	20"H x 18"W x 18"D
980H-XXXX	High	24"H x 18"W x 18"D
G. Square Stool		
990L-XXXX	Low	15"H x 18"W x 18"D
990M-XXXX	Medium	20"H x 18"W x 18"D
990H-XXXX	High	24"H x 18"W x 18"D
H. Blossom Set		
BL30-XXXX-S6-XXXX-G	Center + 6 Petals	18"H x 66"W x 60"D
I. Soft Sway Rocking Chair		
1000RC-VX-XXXX	Large	30.5"H x 22.5"W x 29"D
7000RC-VX-XXXX	Small	26"H x 21"W x 26.5"D

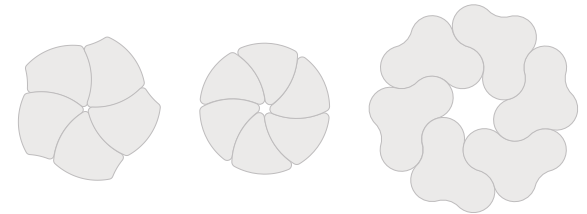
Soft Seating & Lounge



See all QuickShip fabric options on p. 14!

Soft Seating for Pods + Groups

- Soft seating creates a welcoming and comfortable environment by establishing islands of quiet and calm where creativity, collaboration, and socialization can flow naturally.
- Adding flexible seating to your spaces increases a user's sensory experience, shown to improve calmness, focus, and reduce tension. By creating space where humans of all ages can relax, you foster positive attitudes and encourage learning.
- Choose from Shapes, Kids Shapes, Cloud 9, or Chevron options and add fun, soft, comfortable and interactive seating to your learning environments.



Part No.	Description	Dimensions
A. Shapes Bench		
900S-XXXX	Shapes Bench	18"H x 29"W x 28.5"D
915S-XXXX	Kids Shapes Bench	16"H x 18"W x 20"D
B. Cloud 9 Bench		
1200S-XXXX	Cloud 9	18"H x 48"W x 33.5"D
C. Chevron Bench		
1100S-XXXX	Chevron	18"H x 30"W x 24"D

Beanies by MooreCo

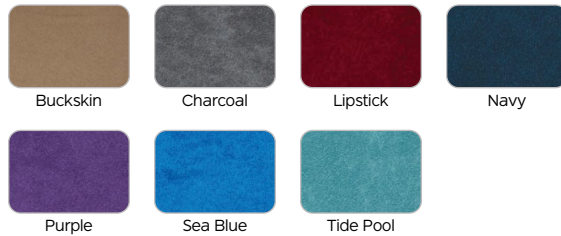
Find a cozy pod to recharge during the day. Featuring the same soft and comfortable interior cushioning used for our highest quality soft seating, these bean bag chairs come in multiple sizes and versions for both indoor and outside settings.

A. Indoor Beanies: Indoor styles feature an exterior of cozy microsuede. Available in select fabrics and multiple colors to suit any room with style. 100% machine washable dual layer bean bag with removable insert.

B. Outdoor Beanies: Outdoor Beanies feature a 100% machine washable exterior made of Sunbrella canvas with a removable insert. Outdoor Beanies are filled with polystyrene infill.

Part No.	Description	Dimensions
A. Indoor Beanies		
58581-VX-XXXX	Lima Lounger (S)	26"H x 46"W x 34"D
58580-VX-XXXX	Lima Lounger (L)	36"H x 64"W x 47"D
58582-VX-XXXX	Lentil Lounger (S)	16"H x 45"W x 45"D
58583-VX-XXXX	Lentil Lounger (L)	40"H x 48"W x 58"D
58584-VX-XXXX	Pinto Pillow	15"H x 44"W x 64"D
B. Outdoor Beanies		
58588-VX-XXXX	Chana Lounge Chair	30"H x 36"W x 28"D
58589-VX-XXXX	Fava Lounge Chair	28"H x 26"W x 36"D
58585-VX-XXXX	Square Ottoman	17"H x 17"W x 17"D
58586-VX-XXXX	Round Ottoman	17"H x 21"W x 21"D
58587-VX-XXXX	Rectangle Ottoman	14"H x 26"W x 18"D

Indoor Fabric Options:







Outdoor Fabric Options:





	Simple/ Indefinite	Continuous/ Progressive	Perfect	Perfect Continuous
Present	I play	I am playing	I have played	I have been playing
Past	I played	I was playing	I had played	I had been playing
Future	I will play	I will be playing	I will have played	I will have been playing

Connect with us...

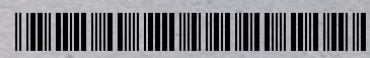
-  [instagram.com/mooreco_inc](https://www.instagram.com/mooreco_inc)
-  [pinterest.com/moorecoinc](https://www.pinterest.com/moorecoinc)
-  [facebook.com/moorecoinc](https://www.facebook.com/moorecoinc)
-  [linkedin.com/company/mooreco-inc](https://www.linkedin.com/company/mooreco-inc)
-  twitter.com/moorecoinc
-  [youtube.com/moorecoinc](https://www.youtube.com/moorecoinc)
-  [tiktok.com/@moorecoinc](https://www.tiktok.com/@moorecoinc)



[moorecoinc.com/quickship](https://www.moorecoinc.com/quickship)



MooreCo Inc.
 2885 Lorraine Avenue | Temple, TX 76501
 p: 800.749.2258 | f: 866.888.7483
www.moorecoinc.com



703673126021

C090624 M103124