

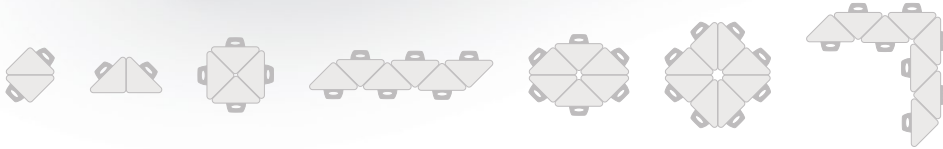
HIERARCHY JET DESK



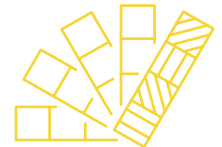
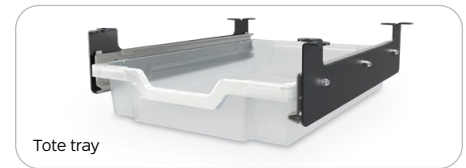
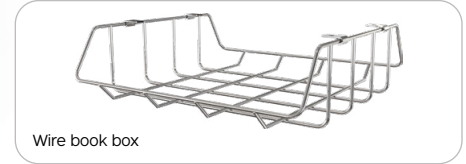
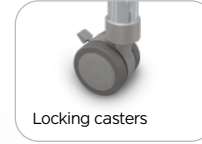
Allow your students to soar.

Give cooperative learning a boost with countless arrangements.





| | Standard Leg | Standing Leg |
|-------------------|--------------|--------------|
| Casters | ✓ | ✓ |
| Pack Hook | ✓ | ✓ |
| Wire Book Box | ✓ | ✓ |
| Enclosed Book Box | ✓ | ✓ |
| Tote Tray II | ✓ | ✗ |



HIERARCHY JET DESK

- Help your students soar with the Hierarchy Jet Desk. Create a versatile environment and give cooperative learning a boost with countless arrangements.
- Offering quick and easy assembly, numerous group configurations, height adjustability, and custom laminates.
- Join the Hierarchy Jet Desk together in a number of ways to fit your needs. The highly versatile desk's fun and ergonomic shape provides flexibility and workspace comfort. Allows easy left- or right-hand seating.
- Comes with scratch resistant 1-¼" thick HPL top and 3mm flat edge banding. Available in standard and custom laminates and edge bands.
- Powder-coated steel legs are designed for quick assembly and one-screw adjustment, available with a platinum or black finish (please note: black youth height and standing height legs are considered custom and incur longer lead times and MOQs).
- Choose from three leg height adjustment ranges to fit the users and activities for your environment. Standard legs (1-½" diameter) adjust from 18" to 29"H. Youth height legs (1-½" diameter) adjust from 12" to 18"H. And standing height legs (1-¾" diameter) adjust from 27" to 42"H.
- Legs include floor safe glides, or choose optional dual-wheel locking casters for easy pod configuration.
- SCS Indoor Advantage Gold Certified.

This product is customizable! View our most up-to-date fabric and finish catalog online by scanning the QR code or visiting moorecoinc.com/materials

| PART NO. | ITEM | DIMENSIONS | SHIP WT. |
|-----------------------------|--|--------------------------|----------|
| PRODUCT | | | |
| 1733GX-XXXX | Hierarchy Jet Desk - Black Legs | 18" - 29"H x 41"W x 23"D | 55 lbs |
| 1743GX-XXXX | Hierarchy Jet Desk - Platinum Legs | 18" - 29"H x 41"W x 23"D | 55 lbs |
| 1753GX-XXXX | Hierarchy Jet Desk - Black Legs (Youth Height) | 12" - 18"H x 41"W x 23"D | 55 lbs |
| 1763GX-XXXX | Hierarchy Jet Desk - Platinum Legs (Youth Height) | 12" - 18"H x 41"W x 23"D | 55 lbs |
| 1773GX-XXXX | Hierarchy Jet Desk - Black Legs (Standing Height) | 27" - 42"H x 41"W x 23"D | 55 lbs |
| 1783GX-XXXX | Hierarchy Jet Desk - Platinum Legs (Standing Height) | 27" - 42"H x 41"W x 23"D | 55 lbs |
| OPTIONAL ACCESSORIES | | | |
| 12934 | Hierarchy Casters (set of 2 locking) | 2.6" diameter | 4 lbs |
| 66669 | Student Desk Pack Hook (set of 2) | Holds up to 50 lbs | 2 lbs |
| 66662 | Student Desk Wire Book Box (Chrome) | 4"H x 15"W x 13.5"D | 5 lbs |
| 66633 | Student Desk Enclosed Book Box (Platinum) | 4"H x 17"W x 12"D | 3 lbs |
| 45131 | Student Desk Tote Tray II | 5.7"H x 14.9"W x 17"D | 10 lbs |



MOORECO INC.
 2885 Lorraine Avenue | Temple, TX 76501
 p: 800.749.2258 | f: 866.888.7483
moorecoinc.com